

WATER AND WASTE SERVICE CALCULATIONS (SHELL ONLY - NO OCCUPANCY)

JOB NAME: BUILDING 6 RESTROOM DATE: 08/24/21

| FIXTURE TYPE | NO. | WASTE | | COLD WATER | | HOT WATER | | TOTAL WATER |
|------------------|-----|-------|-------|------------|-------|-----------|-------|-------------|
| | | FU | TOTAL | FU | TOTAL | FU | TOTAL | |
| LAVATORY | 6 | 1 | 6 | 1 | 6 | 1 | 6 | 6 |
| MOP SINK | 1 | 3 | 3 | 3 | 3 | 3 | 3 | 3 |
| FLOOR DRAIN | 2 | 0 | 0 | 0 | 0 | 0 | 0 | 0 |
| URINAL | 2 | 2 | 4 | 4 | 8 | 0 | 0 | 8 |
| WATER CLOSET, FV | 8 | 4 | 32 | 5 | 40 | 0 | 0 | 40 |
| TOTAL FU | | | 45.0 | | 57.0 | | 9.0 | 57 |

WATER AND WASTE SERVICE CALCULATIONS (SHELL ONLY - NO OCCUPANCY)

JOB NAME: BUILDING 7 RESTROOM DATE: 08/24/21

| FIXTURE TYPE | NO. | WASTE | | COLD WATER | | HOT WATER | | TOTAL WATER |
|------------------|-----|-------|-------|------------|-------|-----------|-------|-------------|
| | | FU | TOTAL | FU | TOTAL | FU | TOTAL | |
| LAVATORY | 8 | 1 | 8 | 1 | 8 | 1 | 8 | 8 |
| MOP SINK | 1 | 3 | 3 | 3 | 3 | 3 | 3 | 3 |
| FLOOR DRAIN | 4 | 0 | 0 | 0 | 0 | 0 | 0 | 0 |
| URINAL | 2 | 2 | 4 | 4 | 8 | 0 | 0 | 8 |
| WATER CLOSET, FV | 6 | 4 | 24 | 5 | 30 | 0 | 0 | 30 |
| HOSE BIBB | 2 | 0 | 0 | 2.5 | 5 | 0 | 0 | 5 |
| IRRIGATION STUB | 1 | 0 | 0 | 5 | 5 | 0 | 0 | 5 |
| TOTAL FU | | | 39.0 | | 59.0 | | 11.0 | 59 |

WATER AND WASTE SERVICE CALCULATIONS (SHELL ONLY - NO OCCUPANCY)

JOB NAME: BUILDING 8 RESTROOM DATE: 08/24/21

| FIXTURE TYPE | NO. | WASTE | | COLD WATER | | HOT WATER | | TOTAL WATER |
|-----------------------|-----|-------|-------|------------|-------|-----------|-------|-------------|
| | | FU | TOTAL | FU | TOTAL | FU | TOTAL | |
| LAVATORY | 8 | 1 | 8 | 1 | 8 | 1 | 8 | 8 |
| MOP SINK | 2 | 3 | 6 | 3 | 6 | 3 | 6 | 6 |
| FLOOR DRAIN | 4 | 0 | 0 | 0 | 0 | 0 | 0 | 0 |
| URINAL | 2 | 2 | 4 | 4 | 8 | 0 | 0 | 8 |
| WATER CLOSET, FV | 6 | 4 | 24 | 5 | 30 | 0 | 0 | 30 |
| HOSE BIBB | 2 | 0 | 0 | 2.5 | 5 | 0 | 0 | 5 |
| HUB DRAIN (VENT ONLY) | 1 | 0 | 0 | 0 | 0 | 0 | 0 | 0 |
| IRRIGATION STUB | 1 | 0 | 0 | 5 | 5 | 0 | 0 | 5 |
| TOTAL FU | | | 50.0 | | 62.0 | | 14.0 | 62 |

POTABLE WATER PIPE SCHEDULE

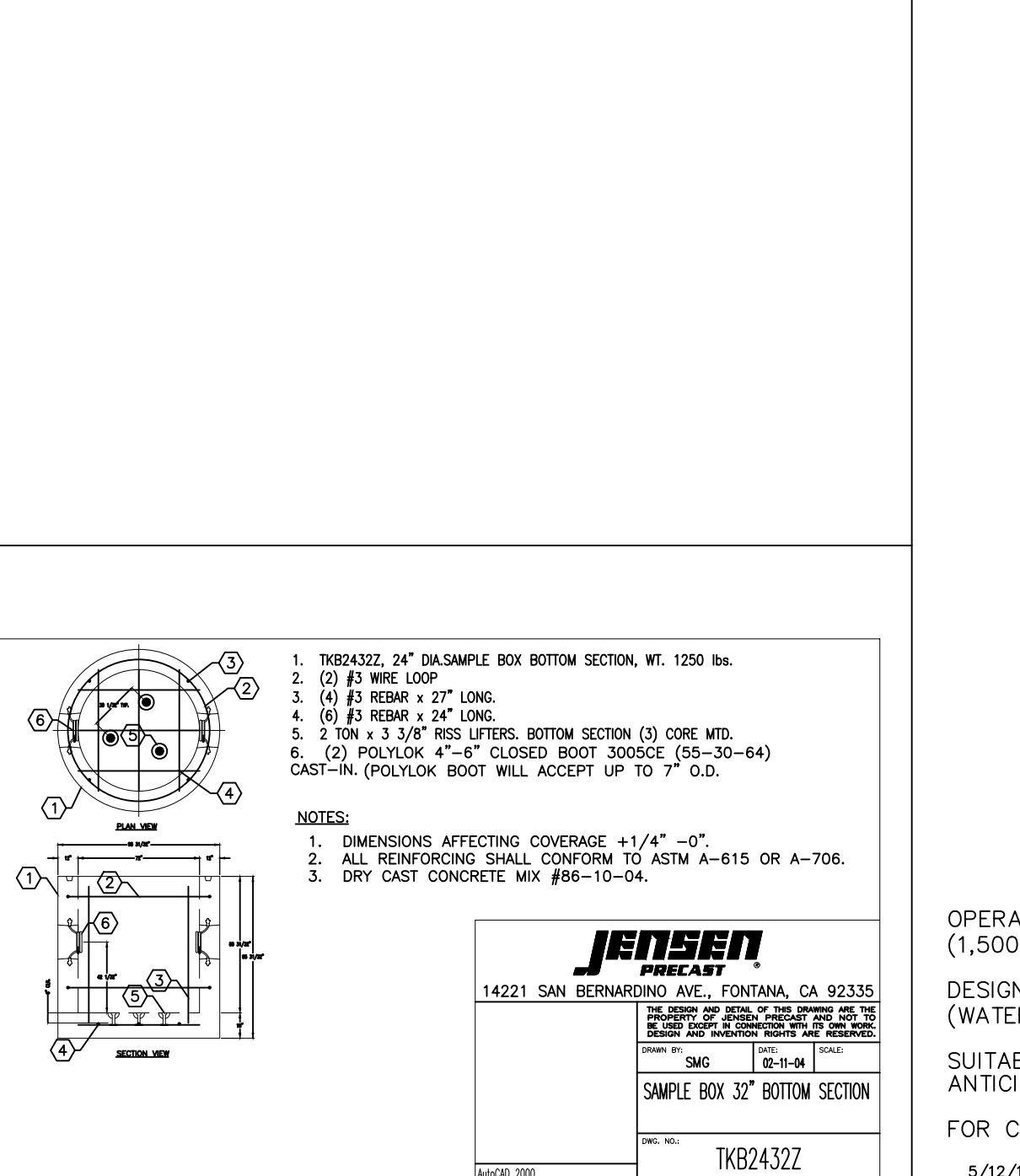
| NOMINAL TUBING SIZE | COLD WATER PIPING | | HOT WATER PIPING | |
|---------------------|-------------------|-------------|------------------|---------------|
| | EQUIVALENT WSFUS | FLUSH VALVE | EQUIVALENT WSFUS | REFER TO NOTE |
| 1/2" | 1 | 0 | 1 | 1 |
| 3/4" | 6 | 0 | 6 | |
| 1" | 15 | 0 | 15 | |
| 1-1/4" | 30 | 0 | 28 | |
| 1-1/2" | 58 | 15 | 46 | |
| 2" | 205 | 95 | 119 | |
| 2-1/2" | 455 | 329 | 245 | |
| 3" | 719 | 666 | 406 | |

- NOTES:
- 1/2" NOMINAL TUBING SIZE IS FOR FIXTURE CONNECTIONS ONLY AND SHALL NOT BE USED FOR BRANCH PIPING.
 - SIZING BASED ON FRICTION LOSS OF 4.2 PSI PER 100 FEET.
 - GPM AND WSFUS LIMITED BY 8.0 FPS VELOCITY FOR COLD WATER
 - GPM AND WSFUS LIMITED BY 5.0 FPS VELOCITY FOR HOT WATER
 - INSIDE POTABLE WATER SUPPLY PIPING SHALL BE OF TYPE "L" COPPER.

POTABLE WATER PIPE SCHEDULE

| NOMINAL TUBING SIZE | COLD WATER PIPING | | HOT WATER PIPING | |
|---------------------|-------------------|-------------|------------------|---------------|
| | EQUIVALENT WSFUS | FLUSH VALVE | EQUIVALENT WSFUS | REFER TO NOTE |
| 1/2" | 1 | 0 | 1 | 1 |
| 3/4" | 6 | 0 | 6 | |
| 1" | 15 | 0 | 15 | |
| 1-1/4" | 28 | 0 | 28 | |
| 1-1/2" | 56 | 14 | 46 | |
| 2" | 195 | 88 | 119 | |
| 2-1/2" | 431 | 295 | 245 | |
| 3" | 719 | 666 | 406 | |

- NOTES:
- 1/2" NOMINAL TUBING SIZE IS FOR FIXTURE CONNECTIONS ONLY AND SHALL NOT BE USED FOR BRANCH PIPING.
 - SIZING BASED ON FRICTION LOSS OF 3.8 PSI PER 100 FEET.
 - GPM AND WSFUS LIMITED BY 8.0 FPS VELOCITY FOR COLD WATER
 - GPM AND WSFUS LIMITED BY 5.0 FPS VELOCITY FOR HOT WATER
 - INSIDE POTABLE WATER SUPPLY PIPING SHALL BE OF TYPE "L" COPPER.



SAMPLE BOX DETAIL (N.T.S.) **15**

DOMESTIC WATER CALCULATIONS (SHELL ONLY - NO OCCUPANCY)

BASED ON CPC 610 AND CPC APPENDIX A

BUILDING 6

STREET SERVICE: AVAILABLE STATIC PRESSURE AT CITY MAIN: 73 PSI

LOSSES:

- FRICTION LOSS IN MAIN METER: 8 PSI
- FRICTION LOSS IN MAIN BFP: 8 PSI
- ELEVATION RISE LOSS (25 FEET AT 434FT): 11 PSI
- MINIMUM PRESSURE REQUIRED AT FIXTURES: 25 PSI

AVAILABLE PRESSURE FOR FRICTION LOSS: 21 PSI

TOTAL DEVELOPED LENGTH: 500 FT

AVAILABLE FRICTION LOSS PER 100 FT OF PIPING: 4.2 PSI

MAX FLUSH VALVE WSFUS, 3" LINE: 666

BUILDING 7

STREET SERVICE: AVAILABLE STATIC PRESSURE AT CITY MAIN: 72 PSI

LOSSES:

- FRICTION LOSS IN MAIN METER: 5 PSI
- FRICTION LOSS IN MAIN BFP: 13 PSI
- ELEVATION RISE LOSS (25 FEET AT 434FT): 11 PSI
- MINIMUM PRESSURE REQUIRED AT FIXTURES: 25 PSI

AVAILABLE PRESSURE FOR FRICTION LOSS: 18 PSI

TOTAL DEVELOPED LENGTH: 475 FT

AVAILABLE FRICTION LOSS PER 100 FT OF PIPING: 3.8 PSI

MAX FLUSH VALVE WSFUS, 2" LINE: 88

BUILDING 8

STREET SERVICE: AVAILABLE STATIC PRESSURE AT CITY MAIN: 68 PSI

LOSSES:

- FRICTION LOSS IN MAIN METER: 5 PSI
- FRICTION LOSS IN MAIN BFP: 13 PSI
- ELEVATION RISE LOSS (25 FEET AT 434FT): 11 PSI
- MINIMUM PRESSURE REQUIRED AT FIXTURES: 25 PSI

AVAILABLE PRESSURE FOR FRICTION LOSS: 14 PSI

TOTAL DEVELOPED LENGTH: 325 FT

AVAILABLE FRICTION LOSS PER 100 FT OF PIPING: 4.2 PSI

MAX FLUSH VALVE WSFUS, 2" LINE: 95

BUILDING 9

STREET SERVICE: AVAILABLE STATIC PRESSURE AT CITY MAIN: 68 PSI

LOSSES:

- FRICTION LOSS IN MAIN METER: 5 PSI
- FRICTION LOSS IN MAIN BFP: 13 PSI
- ELEVATION RISE LOSS (25 FEET AT 434FT): 11 PSI
- MINIMUM PRESSURE REQUIRED AT FIXTURES: 25 PSI

AVAILABLE PRESSURE FOR FRICTION LOSS: 14 PSI

TOTAL DEVELOPED LENGTH: 325 FT

AVAILABLE FRICTION LOSS PER 100 FT OF PIPING: 4.2 PSI

MAX FLUSH VALVE WSFUS, 2" LINE: 95

SCHEDULE OF ELECTRIC WATER HEATERS

| TAG | MAKE & MODEL | TANK CAP. / GAL. | KW RATING | ELECTRICAL RATING | RECOVERY @ 60°F RISE | WATER INLET | WATER OUTLET | DIMENSIONS DIA. X H | REMARKS |
|---------------|--|------------------|-----------|-------------------|----------------------|-------------|--------------|---------------------|-------------------|
| WH-1 (BLDG 6) | AO SMITH DURA-POWER #DEL-30, 5 KW SIMULT. DOUBLE ELEMENT | 30 GAL | 10.0 | 480/3/60 | 68 GPH | 3/4" | 3/4" | 21-3/4"X30-7/8" | SEE NOTES 1, 2, 3 |
| WH-2 | AO SMITH DURA-POWER #DEL-30, 4 KW SIMULT. DOUBLE ELEMENT | 30 GAL | 8.0 | 480/3/60 | 54 GPH | 3/4" | 3/4" | 21-3/4"X30-7/8" | SEE NOTES 1, 2, 3 |

- NOTES:
1. JUNCTION BOX & BRANCH CIRCUIT WIRING SHALL BE FURNISHED AND INSTALLED BY ELEC. CONTRACTOR.
 2. CONTRACTOR TO SET OUTLET TEMPERATURE TO 120°.
 3. ELEMENT SHALL BE CONTROLLED BY AN INDIVIDUALLY MOUNTED THERMOSTAT AND HIGH TEMPERATURE CUTOFF SWITCH.

SCHEDULE OF EXPANSION TANKS

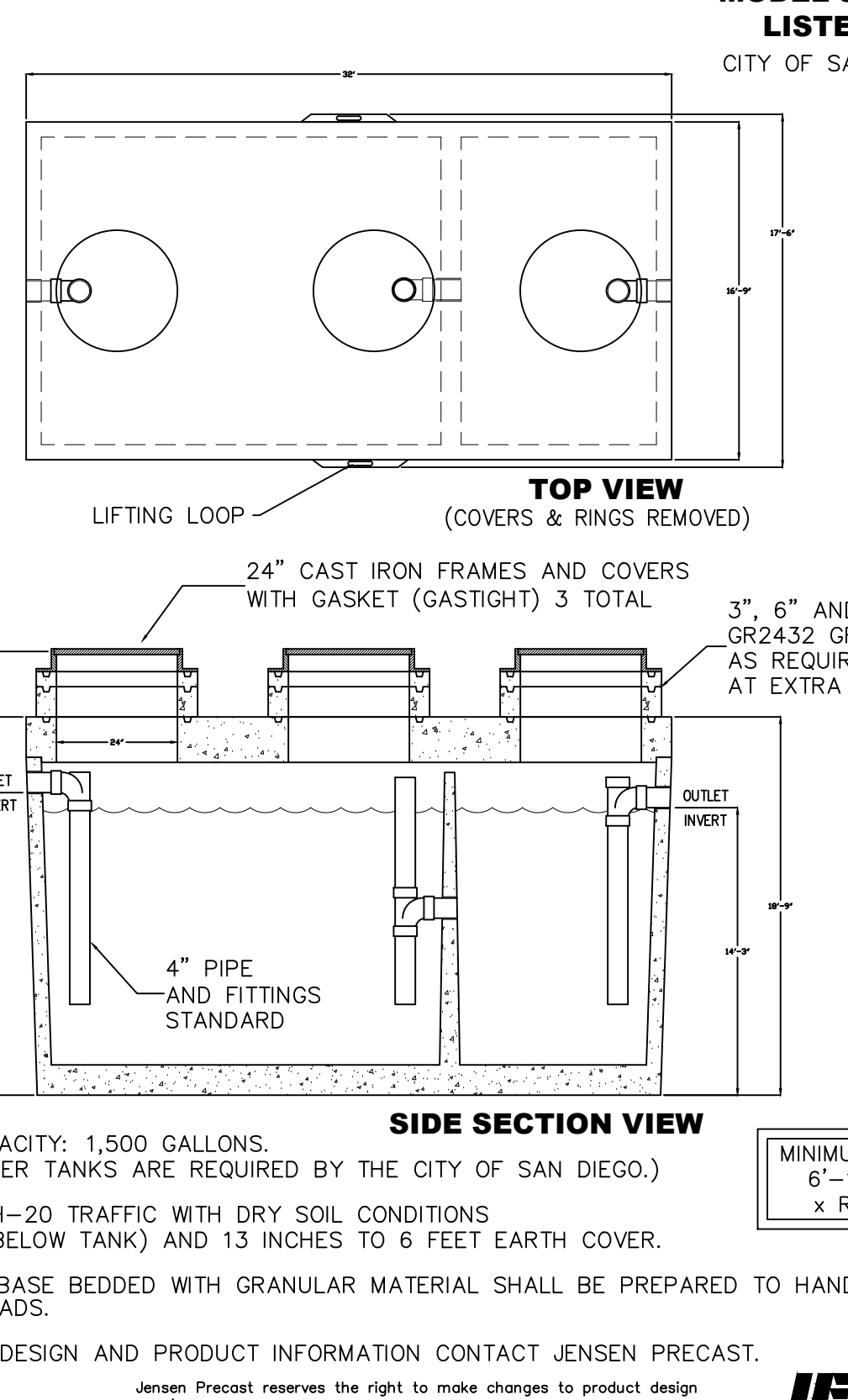
| TAG | TYPE | MANUFACTURER/MODEL NO. | VOLUME (GAL.) | HEIGHT (INCHES) | DIAMETER (INCHES) | WEIGHT (LBS.) | WATER CONNECTION (N.P.T.) | MOUNTING TYPE | REMARKS |
|------|-----------|------------------------------|---------------|-----------------|-------------------|---------------|---------------------------|---------------|-------------------|
| ET-1 | DIAPHRAGM | AMTROL "THERM-X-TROL" #ST-5C | 2.0 | 14" | 8" | 10 | 3/4" | WALL | SEE NOTES 1, 2, 3 |

- NOTES:
1. EXPANSION TANK SHALL BE FABRICATED OF CARBON STEEL WITH POLYPROPYLENE LINER AND HEAVY DUTY, BUTYL RUBBER DIAPHRAGM.
 2. EXPANSION TANK SHALL BE SUITABLE FOR USE IN POTABLE WATER SYSTEMS.
 3. PROVIDE THE MANUFACTURER'S PRINTED SIZING INSTRUCTIONS ON THE THERMAL EXPANSION TANK.

GREASE INTERCEPTOR SCHEDULE (SHELL ONLY - NO OCCUPANCY)

| TAG | LOCATION | MANUFACTURER MODEL | SIZE (L X W X H) | VOLUME (GALLONS) | SERVICE | CAPACITY PER CPC | NOTES |
|------|------------------|----------------------------|--------------------------|------------------|------------|------------------|-------|
| GI-6 | SEE SHEET A1.0.1 | JENSEN PRECAST KJ22500G-LA | 16'-10" X 5'-9" X 6'-0" | 2,500 | BUILDING 6 | 307 OFU | 1,2,3 |
| GI-7 | SEE SHEET A1.0.1 | JENSEN PRECAST JP1800CE-G | 10'-8" X 5'-10" X 6'-3" | 1,500 | BUILDING 7 | 172 OFU | 1,2,3 |
| GI-8 | SEE SHEET A1.0.1 | JENSEN PRECAST KJP2000G-LA | 15'-11" X 4'-11" X 6'-0" | 2,000 | BUILDING 8 | 216 OFU | 1,2,3 |
| GI-9 | SEE SHEET A1.0.1 | JENSEN PRECAST KJ23000G-LA | 16'-10" X 5'-9" X 6'-9" | 3,000 | BUILDING 9 | 342 OFU | 1,2,3 |

- NOTES:
1. INSTALL PER MANUFACTURER'S INSTALLATION INSTRUCTIONS.
 2. HEIGHT WILL VARY WITH RISERS. SEE SPECIFICATION SHEET FOR MORE INFO.
 3. PROVIDE SAMPLE BOX PER JENSEN PRECAST SPECIFICATIONS AND DETAILS ON THIS DRAWING.



1,500 GAL GREASE INTERCEPTOR DETAIL (N.T.S.) **14**

FIXTURE SPECIFICATIONS

RD-1: ROOF DRAIN - ZURN MODEL #ZC100-C-R-VIP. DURA-COATED CAST IRON BODY WITH CAST IRON DOME. COMPLETE WITH UNDERCOP CLAMP, ROOF SUMP RECEIVER, AND VANDAL-PROOF SECURED TOP. SPECIFY NO-HUB OUTLET OF SIZE SPECIFIED ON PLUMBING PLANS.

OD-1: OVERFLOW DRAIN - ZURN MODEL #ZC100-88-C-R-VIP. DURA-COATED CAST IRON BODY WITH CAST IRON DOME. COMPLETE WITH UNDERCOP CLAMP, 2" HIGH WATER DAM, ROOF SUMP RECEIVER, AND VANDAL-PROOF SECURED TOP. SPECIFY NO-HUB OUTLET OF SIZE SPECIFIED ON PLUMBING PLANS.

WC-1: ELONGATED FLUSH VALVE WATER CLOSET
 TOTO C708URV WALL MOUNT SIPHON JET FLUSH VITREOUS CHINA WATER CLOSET WITH 1-1/2" BACK Siphon. CEFRONTECT CERAMIC GLAZE. AND SENSOR-OPERATED 1.28 GPF FLUSH VALVE. PROVIDE WITH TOTO TET2L3A18SS ECOPOWER FLUSH VALVE. MOUNT AT ADA HEIGHT.

UR-1: WALL HUNG URINAL
 TOTO UT106UV HIGH EFFICIENCY WASHOUT FLUSH ACTION VITREOUS CHINA URINAL WITH 3/4" BACK Siphon. CEFRONTECT CERAMIC GLAZE. AND SENSOR-OPERATED 1.125 GPF FLUSH VALVE. PROVIDE WITH TOTO TET2L3A18SS ECOPOWER FLUSH VALVE. MOUNT AT ADA HEIGHT.

MS-1: MOP SINK
 36"x24" MOP BASIN BY FIAT OR EQUAL. PROVIDE WITH 3" CHROME PLATED GRID DRAIN. 1/8" BRASS #8-06658TTP CHROME PLATED WALL MOUNTED FAUCET WITH INTEGRAL VACUUM BREAKER. ADJUSTABLE WALL BRIDGE. PAUL HOOK AND HOSE THREADED OUTLET.

FD-1: FLOOR DRAIN
 JAY R. SMITH #2005 FLOOR DRAIN WITH 2" NO-HUB OUTLET AND 5" ROUNDS NICKEL BRONZE STRAINER HEAD. PROVIDE WITH TRAP PRIMER CONNECTION.

DD-1: DECK DRAIN
 MFAB F100-25 CAST IRON AREA DRAIN WITH REINFORCED 6" X 6" SQUARE STRAINER & NO-HUB OUTLET.

HB-1: HOSE BIBB
 MFAB HY-3500-NPB ENCASED LOW LEAD MODERATE CLIMATE WALL HYDRANT WITH VACUUM BREAKER AND KEY LOCK DOOR.

HB-2: ROOF HYDRANT
 MFAB MHY-58 SELF-DRAINING, NON-FREEZE ROOF HYDRANT WITH 3/4" MALE HOSE CONNECTION. HEAVY DUTY CAST IRON HEAD WITH LIFT HANDLE.

HB-3: HOSE BIBB W/O ACCESS DOOR
 MFAB MHY-50 LOW LEAD MODERATE CLIMATE NARROW WALL HYDRANT WITH VACUUM BREAKER AND OPERATING KEY.

TP: TRAP PRIMER
 RPP INC #P1-500 OR #P2-500 TRAP SEAL PRIMER. SEE DETAIL FOR MORE MODEL NUMBERS AND DISTRIBUTION UNIT INFORMATION.

ETP: ELECTRONIC TRAP PRIMER - PPP, INC #MP-500-115V ELECTRONIC TRAP SEAL PRIMER WITH AIR GAP. DISTRIBUTION UNIT W/ 1/4" OPENING PORTS. AND 100 VAC CONTROL UNIT. INSTALL COMPLETE W/ SHUT-OFF VALVE. AND 1/2" TYPE L COPPER DRAIN LINE FROM TRAP SEAL PRIMER OUTLET TO RECEPTOR CONNECTION POINT. SEE DETAIL ON DRAWING P3.1 FOR MORE INFORMATION.

WCO: JAY R. SMITH #402, INSTALLED +18" AFF
 FCO: JAY R. SMITH #4020, INSTALLED FLUSH WITH FLOOR
 DPCO: JAY R. SMITH #4220, INSTALLED FLUSH WITH GRADE
 WATER HAMMER ARRESTOR
 WATER HAMMER ARRESTOR BY WATTS REGULATOR OR APPROVED EQUAL. PROVIDE AT END OF ALL BRANCHES.

ROOF DRAIN SIZING TABLE

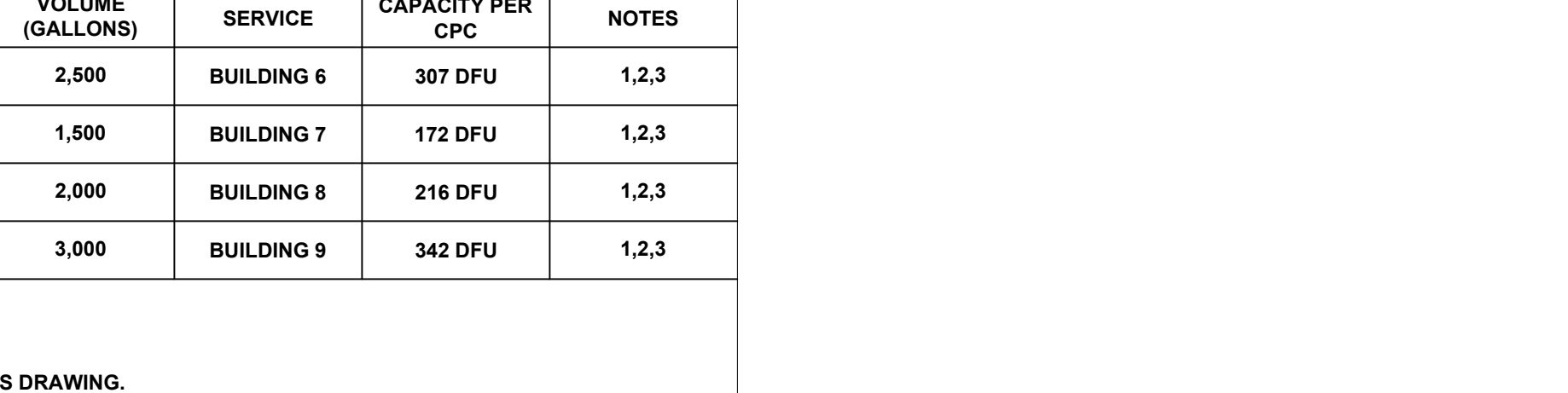
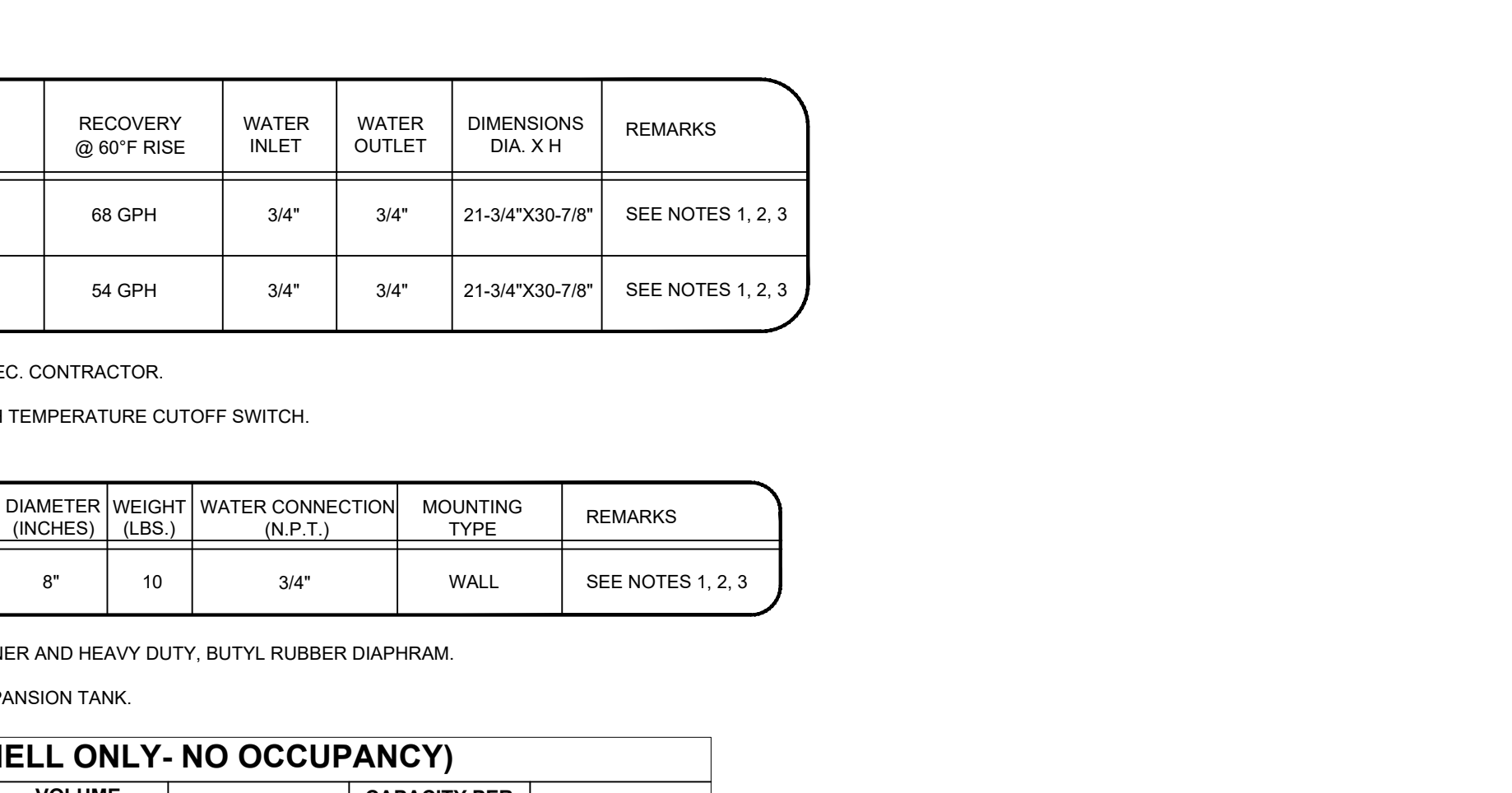
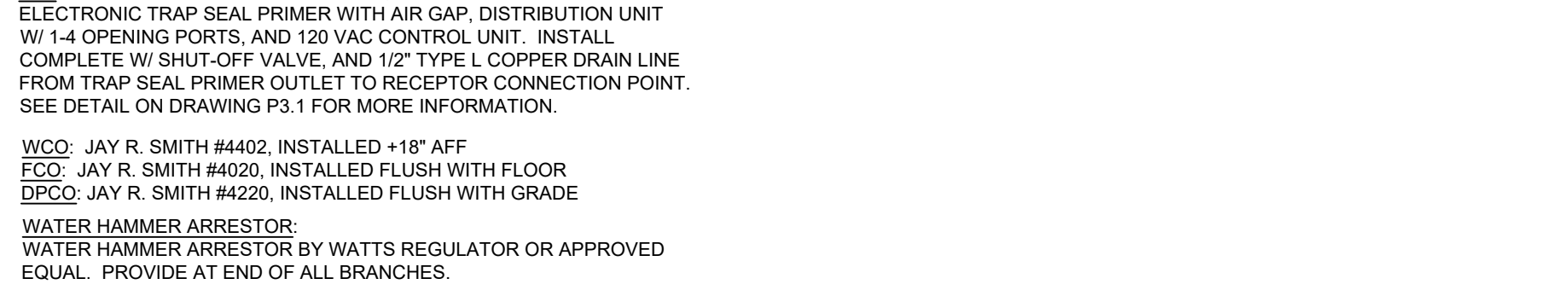
BASED ON CPC TABLES 1103.1, 1103.2
 IN DANA POINT, CA. DESIGN RAINFALL RATE IS 3.0 INCHES PER HOUR (FOR 100 YR, 60 MIN. RAINFALL)

PROJECTED AREAS ALLOWED FOR PIPE SIZES:

| | 3" | 4" | 6" | 8" | 10" |
|-----------------------------------|-----------------------|-----------------------|------------------------|------------------------|------------------------|
| DRAINS & VERTICAL PIPING | 2,930 FT ² | 6,130 FT ² | 17,995 FT ² | 38,660 FT ² | N/A |
| HORIZ. PIPING 1/8" PER FOOT SLOPE | 1,096 FT ² | 2,506 FT ² | 7,133 FT ² | 15,330 FT ² | 27,600 FT ² |

SCHEDULE OF NEW PLUMBING FIXTURES

| FIXTURE TAG | FIXTURE CONNECTIONS (VALVE INLET) | | | | | GPM GPF | FLOOD RISK (A.F.F.) |
|-------------|-----------------------------------|-----------|--------|--------|---------|-----------|---------------------|
| | TRAP | WASTE | VENT | C.W. | H.W. | | |
| RD-1 | --- | SEE PLANS | --- | --- | --- | --- | AT ROOF |
| OD-1 | --- | SEE PLANS | --- | --- | --- | --- | AT ROOF |
| WC-1 | INT. | 3" | 2" | 1-1/2" | --- | 1.28 GPF | SEE ARCH. |
| UR-1 | INT. | 2" | 1-1/2" | 3/4" | --- | 0.125 GPF | SEE ARCH. |
| MS-1 | --- | 3" | 3" | 1-1/2" | 1/2" | 2.0 GPM | APPROX 2'-10" |
| FD-1 | --- | 2" | 2" | 1 1/2" | THRU TP | --- | FLUSH |
| DD-1 | --- | SEE PLANS | --- | --- | --- | --- | FLUSH |
| HB-1,2,3 | --- | --- | --- | 3/4" | --- | 2.5 GPM | --- |
| TP / ETP | --- | --- | --- | 1/2" | --- | --- | --- |
| WCO | --- | SEE PLANS | --- | --- | --- | --- | 18" AFF FLUSH |
| FCD / DPCO | --- | SEE PLANS | --- | --- | --- | --- | --- |



2,000-5,000 GAL GREASE INTERCEPTOR DETAIL (N.T.S.)

| MODEL NUMBER | LIQUID CAPACITY GALLONS | WIDTH "x" | OVERALL LENGTH "x" | TANK HEIGHT "x" | INLET "x" | OUTLET "x" | MINIMUM EXCAVATION WIDTH | MINIMUM EXCAVATION LENGTH | * DEPTH OF BURY |
|--------------|-------------------------|-----------|--------------------|-----------------|-----------|------------|--------------------------|---------------------------|-----------------|
| KJP2000G-LA | 2000 | 4'-11" | 15'-11" | 6'-0" | 5'-0" | 4'-9" | 5'-11" | 16'-11" | 1' TO 6" |
| KJ23000G-LA | 2500 | 5'-9" | 16'-10" | 6'-0" | 5'-0" | 4'-9" | 6'-9" | 17'-10" | 1' TO 6" |
| KJ23000G-LA | 3000 | 5'-9" | 16'-10" | 6'-9" | 5'-9" | 5'-6" | 6'-9" | 17'-10" | 1' TO 5" |
| KJ24000G-LA | 4000 | 7'-8" | 16'-7" | 6'-9" | 5'-6" | 5'-3" | 8'-8" | 17'-7" | 1' TO 5" |
| KJ25000G-LA | 5000 | 7'-8" | 16'-7" | 7'-11" | 6'-9" | 6'-6" | 8'-8" | 17'-7" | 1' TO 4" |

■ TANK DESIGNED FOR H-20 TRAFFIC WHEEL LOAD WITH DRY SOIL CONDITIONS (WATER TABLE BELOW TANK)

■ SUITABLE NATIVE SOIL OR GRANULAR SUB-BASE SHALL BE COMPACTED AND LEVELED TO HANDLE ANTICIPATED LOADS. SEE INSTALLATION PROCEDURES SHEET FOR ADDITIONAL INFO.

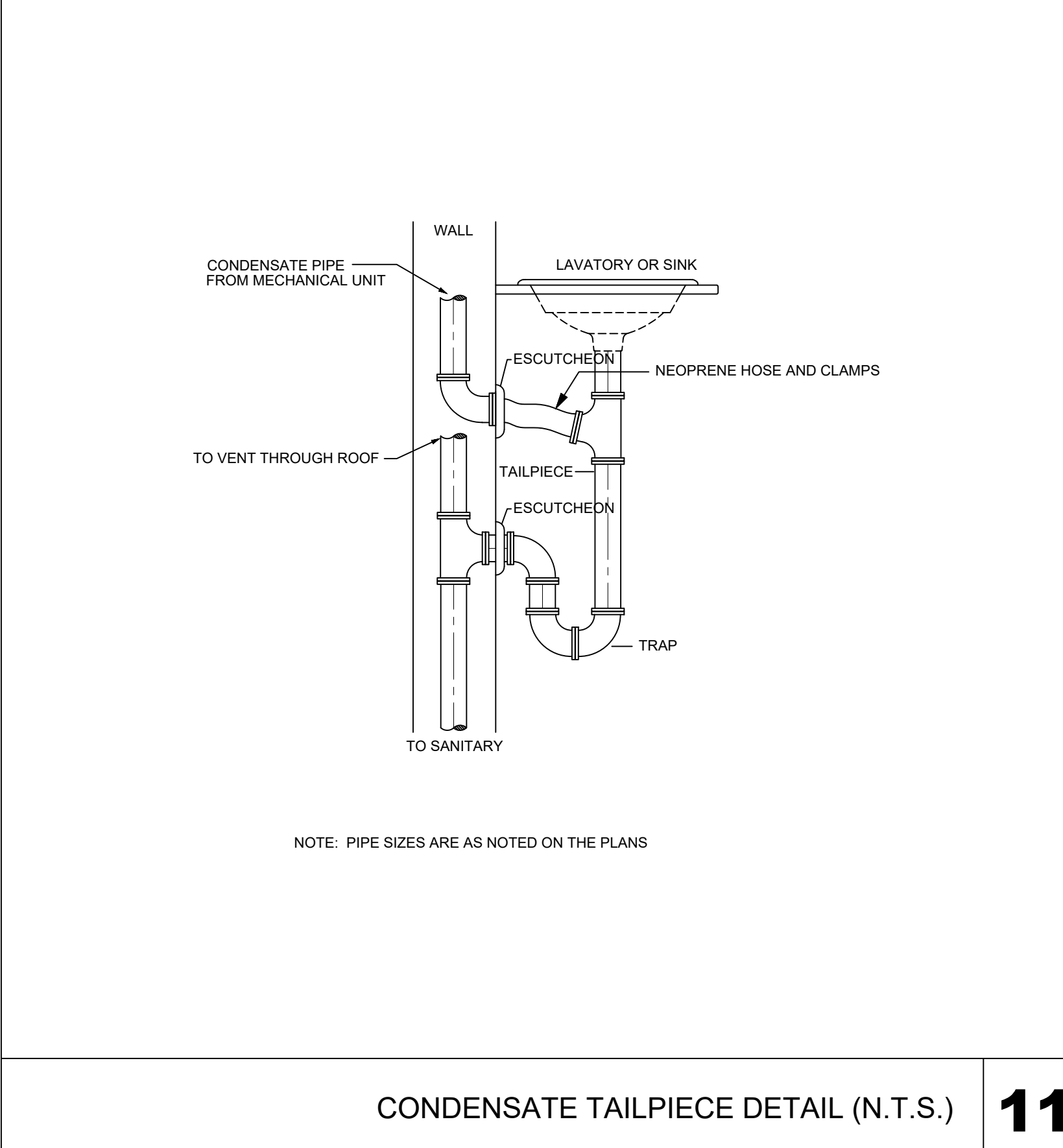
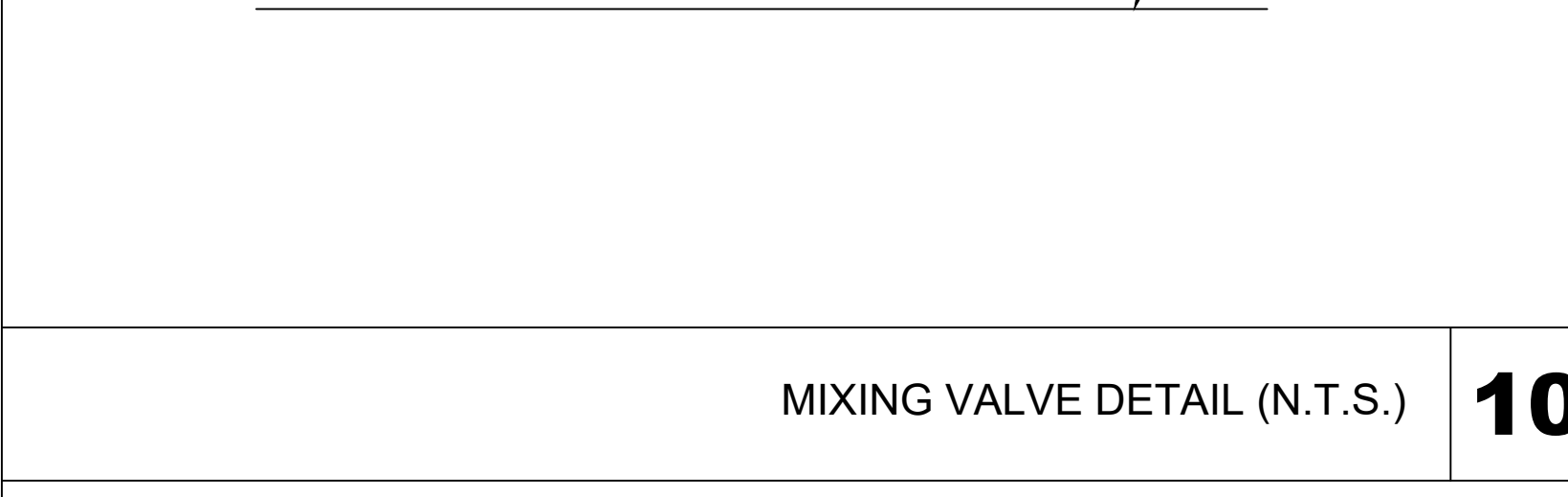
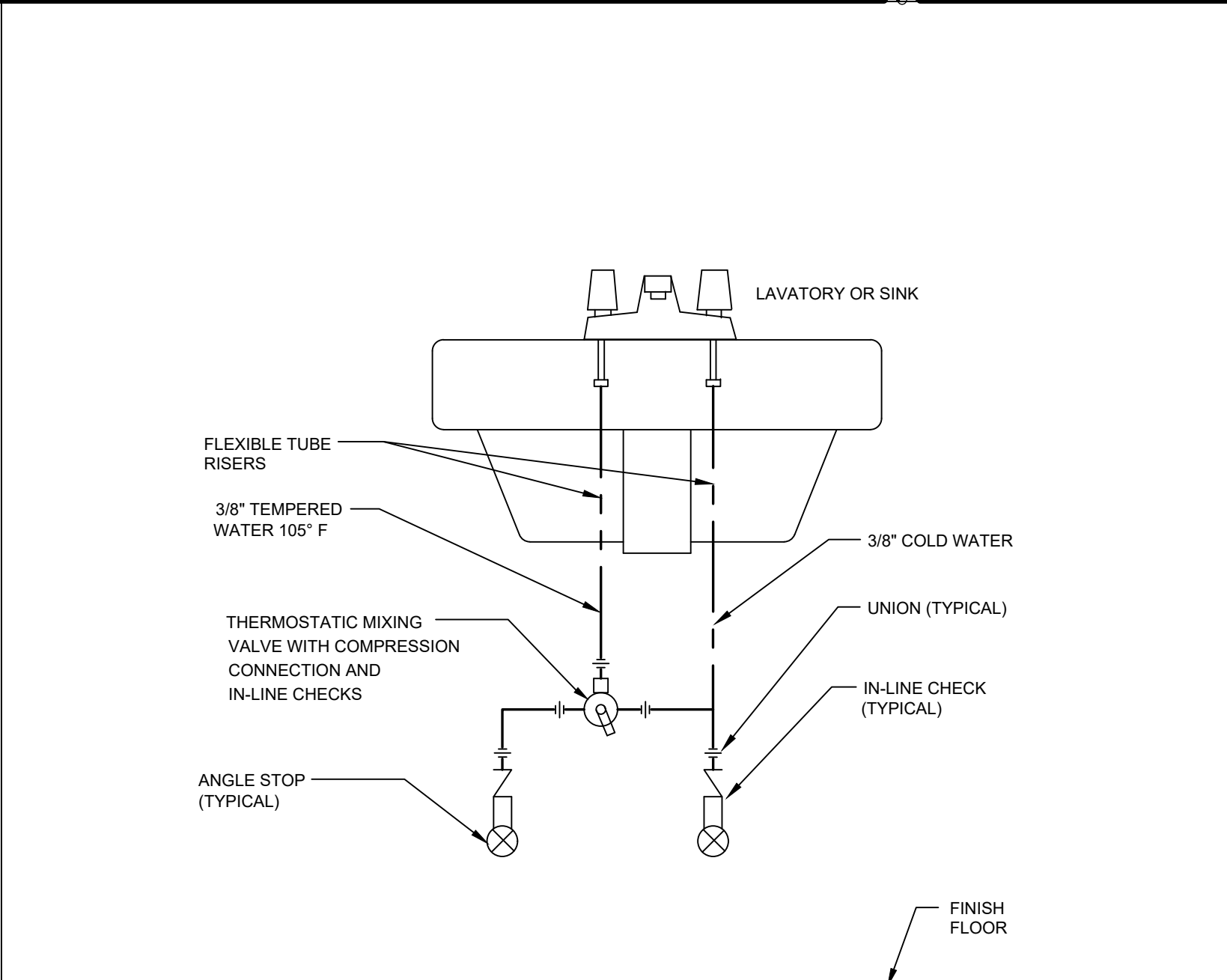
■ FOR COMPLETE DESIGN AND PRODUCT INFORMATION CONTACT JENSEN PRECAST.

2000 - 5000 GALLON
 L.A. COUNTY
 TRAFFIC RATED ACCEPTED BY UPC®

10-01-03
 GREASE LA 2000-5000-W.Dwg
 © 2003 Jensen Precast

THE DESIGN AND DETAIL OF THIS DRAWING ARE THE PROPERTY OF JENSEN PRECAST AND NOT TO BE USED EXCEPT IN CONNECTION WITH ITS OWN WORK. DESIGN AND INVENTION RIGHTS ARE RESERVED.

2,000-5,000 GAL GREASE INTERCEPTOR DETAIL (N.T.S.) **13**



SCHEDULE OF NEW PLUMBING FIXTURES

| FIXTURE TAG | FIXTURE CONNECTIONS (VALVE INLET) | | | | | FLOOR RIM (A.F.F.) |
|-------------|-----------------------------------|-----------|------|------|------|--------------------|
| | TRAP | WASTE | VENT | C.W. | H.W. | |
| RD-1 | --- | SEE PLANS | --- | --- | --- | AT ROOF |
| OD-1 | --- | SEE PLANS | --- | --- | --- | AT ROOF |
| DD-1 | --- | SEE PLANS | --- | --- | --- | FLUSH |
| HB-1 | --- | --- | --- | 3/4" | --- | 2.5 GPM |
| ETP-1 | --- | --- | --- | 1/2" | --- | --- |
| WCO / DPCO | --- | SEE PLANS | --- | --- | --- | 18" AFF FLUSH |

FIXTURE SPECIFICATIONS

RD-1: ROOF DRAIN - ZURN MODEL #ZC100-C-R-V-P, DURA-COATED CAST IRON BODY WITH CAST IRON DOME. COMPLETE WITH UNDERDECK CLAMP, ROOF SUMP RECEIVER, AND VANDAL-PROOF SECURED TOP. SPECIFY NO-HUB OUTLET OF SIZE SPECIFIED ON PLUMBING PLANS.

OD-1: OVERFLOW DRAIN - ZURN MODEL #ZC100-C-R-V-P, DURA-COATED CAST IRON BODY WITH CAST IRON DOME. COMPLETE WITH UNDERDECK CLAMP, 2" HIGH WATER DAM, ROOF SUMP RECEIVER, AND VANDAL-PROOF SECURED TOP. SPECIFY NO-HUB OUTLET OF SIZE SPECIFIED ON PLUMBING PLANS.

DD-1: DECK DRAIN - MIFAB #F110-25 CAST IRON AREA DRAIN WITH REINFORCED 6" X 6" SQUARE STRAINER & NO-HUB OUTLET.

HB-1: HOSE BIBB - MIFAB HY-350-NPS ENCASED LOW LEAD MODERATE CLIMATE WALL HYDRANT WITH VACUUM BREAKER AND KEY LOCK DOOR.

ETP-1: ELECTRONIC TRAP PRIMER - PPP, INC. #MP-500-115V ELECTRONIC TRAP SEAL PRIMER WITH AIR GAP, DISTRIBUTION UNIT W/ 1-4 OPENING PORTS, AND 120 VAC CONTROL UNIT. INSTALL COMPLETE W/ SHUT-OFF VALVE, AND 1/2" TYPE L COPPER DRAIN LINE FROM TRAP SEAL PRIMER OUTLET TO RECEPTOR CONNECTION POINT. SEE DETAIL ON DRAWING P3.1 FOR MORE INFORMATION.

WCO / DPCO: JAY R. SMITH #4402, INSTALLED +18" AFF
 FCO: JAY R. SMITH #4020, INSTALLED FLUSH WITH FLOOR
 DPCO: JAY R. SMITH #4020, INSTALLED FLUSH WITH GRADE

ROOF DRAIN SIZING TABLE

BASED ON CPC TABLES 1103.1, 1103.2
 IN DANA POINT, CA, DESIGN RAINFALL RATE IS 3.0 INCHES PER HOUR (FOR 100 YR, 60 MIN. RAINFALL)

PROJECTED AREAS ALLOWED FOR PIPE SIZES:

| | 3" | 4" | 6" | 8" | 10" |
|--------------------------------------|-----------------------|-----------------------|------------------------|------------------------|------------------------|
| DRAINS & VERTICAL PIPING | 2,930 FT ² | 6,130 FT ² | 17,995 FT ² | 38,660 FT ² | N/A |
| HORIZ. PIPING 1/8" PER FOOT SLOPE | 1,066 FT ² | 2,506 FT ² | 7,133 FT ² | 15,330 FT ² | 27,600 FT ² |

DOMESTIC WATER CALCULATIONS

BASED ON CPC 610 AND CPC APPENDIX A

BUILDING 10

STREET SERVICE: AVAILABLE STATIC PRESSURE AT CITY MAIN: 67 PSI

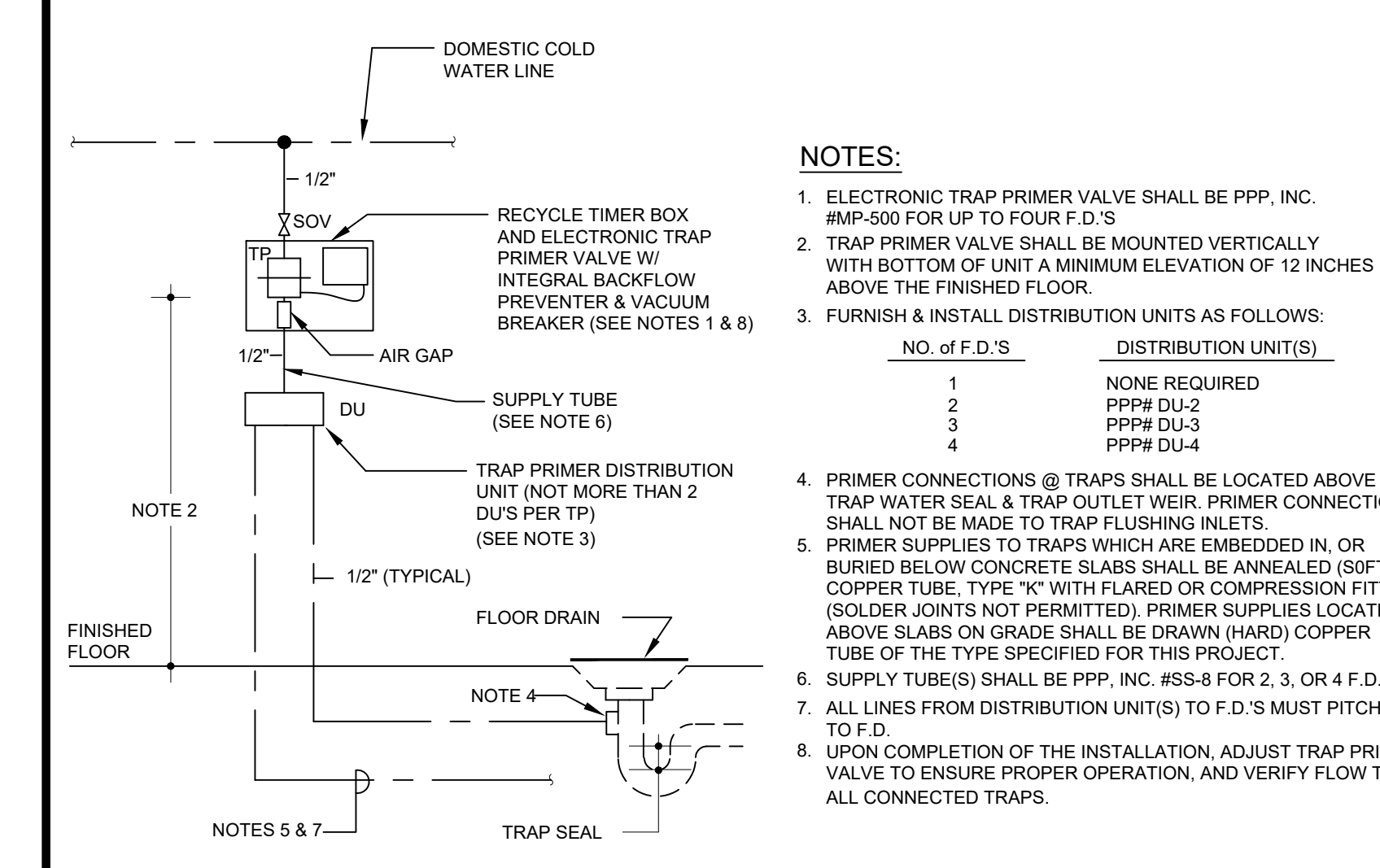
LOSSES:

| | |
|---|---------|
| FRICTION LOSS IN MAIN METER: | 5 PSI |
| FRICTION LOSS IN MAIN BFP: | 13 PSI |
| ELEVATION RISE LOSS: (25 FEET AT 434FT): | 11 PSI |
| MINIMUM PRESSURE REQUIRED AT FIXTURES: | 25 PSI |
| AVAILABLE PRESSURE FOR FRICTION LOSS: | 13 PSI |
| TOTAL DEVELOPED LENGTH: | 300 FT |
| AVAILABLE FRICTION LOSS PER 100 FT OF PIPING: | 4.3 PSI |
| MAX FLUSH VALVE WSFUS, 2" LINE: | 95 |

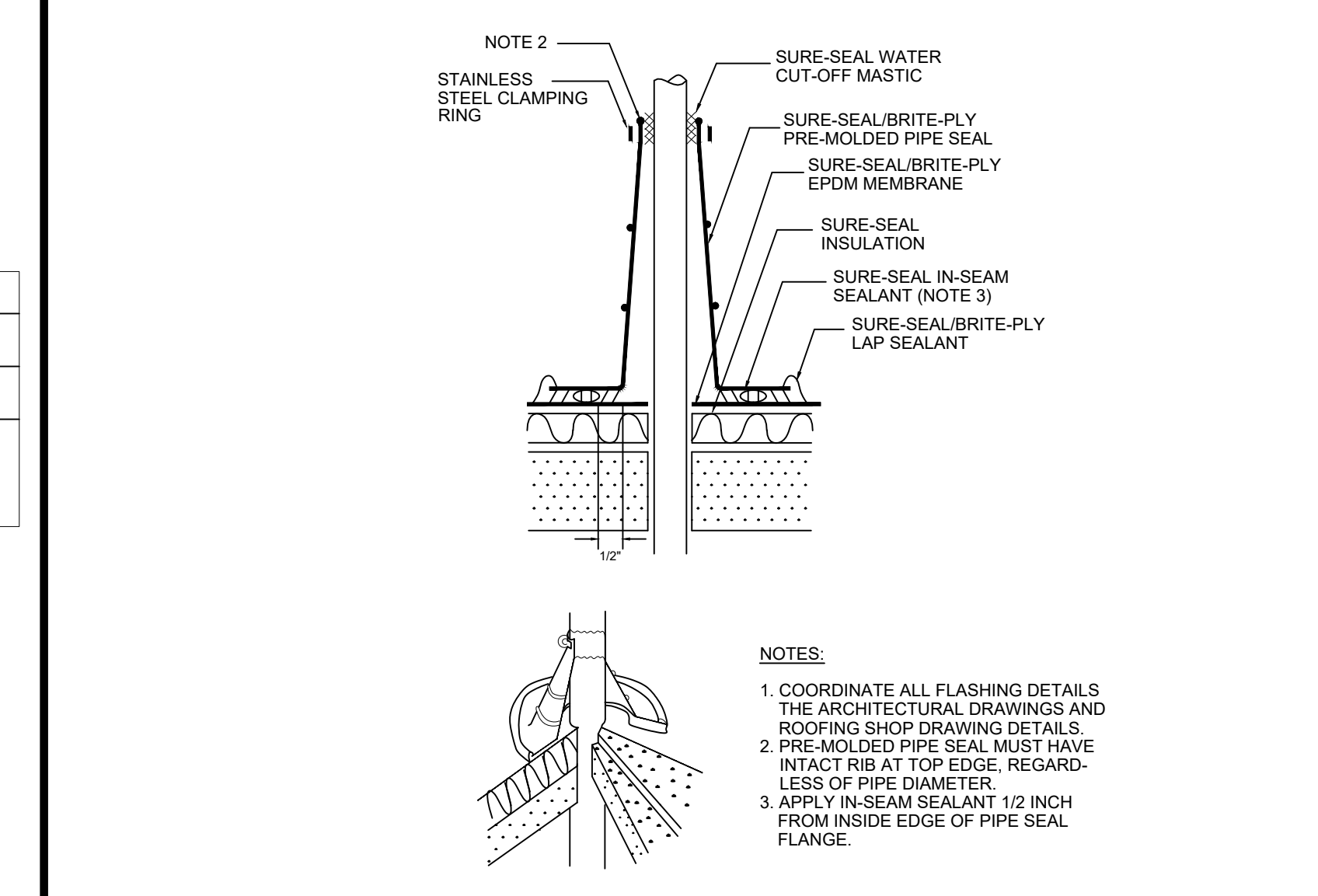
GREASE INTERCEPTOR SCHEDULE (SHELL ONLY- NO OCCUPANCY)

| TAG | LOCATION | MANUFACTURER MODEL NO. | SIZE (L X W X H) | VOLUME (GALLONS) | SERVICE | CAPACITY PER CPC | NOTES |
|-------|------------------|----------------------------|-------------------------|------------------|-------------|------------------|-------|
| GI-10 | SEE SHEET A1.0.1 | JENSEN PRECAST JP1500ECE-G | 10'-8" X 5'-10" X 6'-3" | 1,500 | BUILDING 10 | 172 DFU | 1,2,3 |

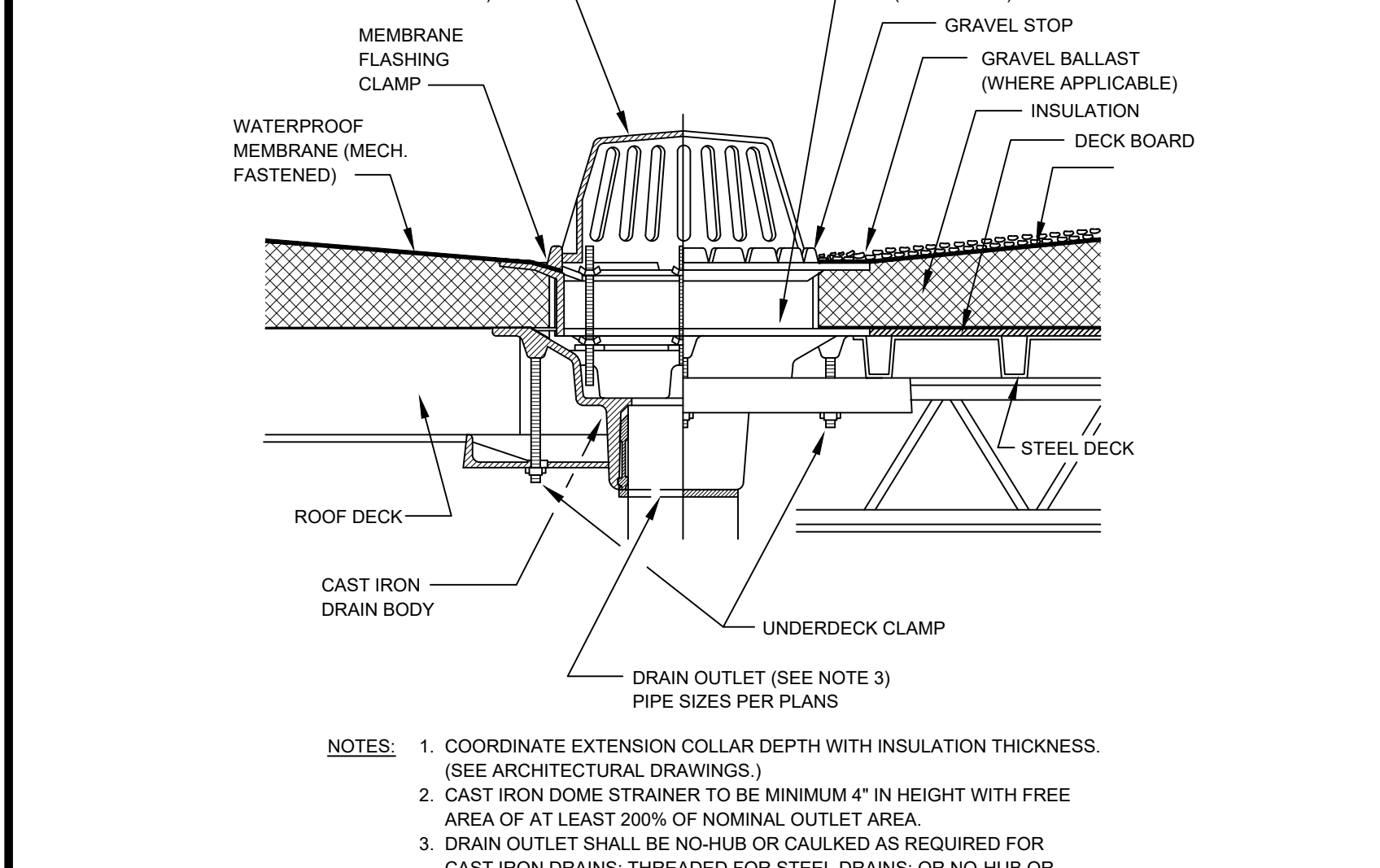
NOTES:
 1. INSTALL PER MANUFACTURER'S INSTALLATION INSTRUCTIONS.
 2. HEIGHT WILL VARY WITH RISERS. SEE SPECIFICATION SHEET FOR MORE INFO.
 3. PROVIDE SAMPLE BOX PER JENSEN PRECAST SPECIFICATIONS AND DETAILS ON THIS DRAWING.



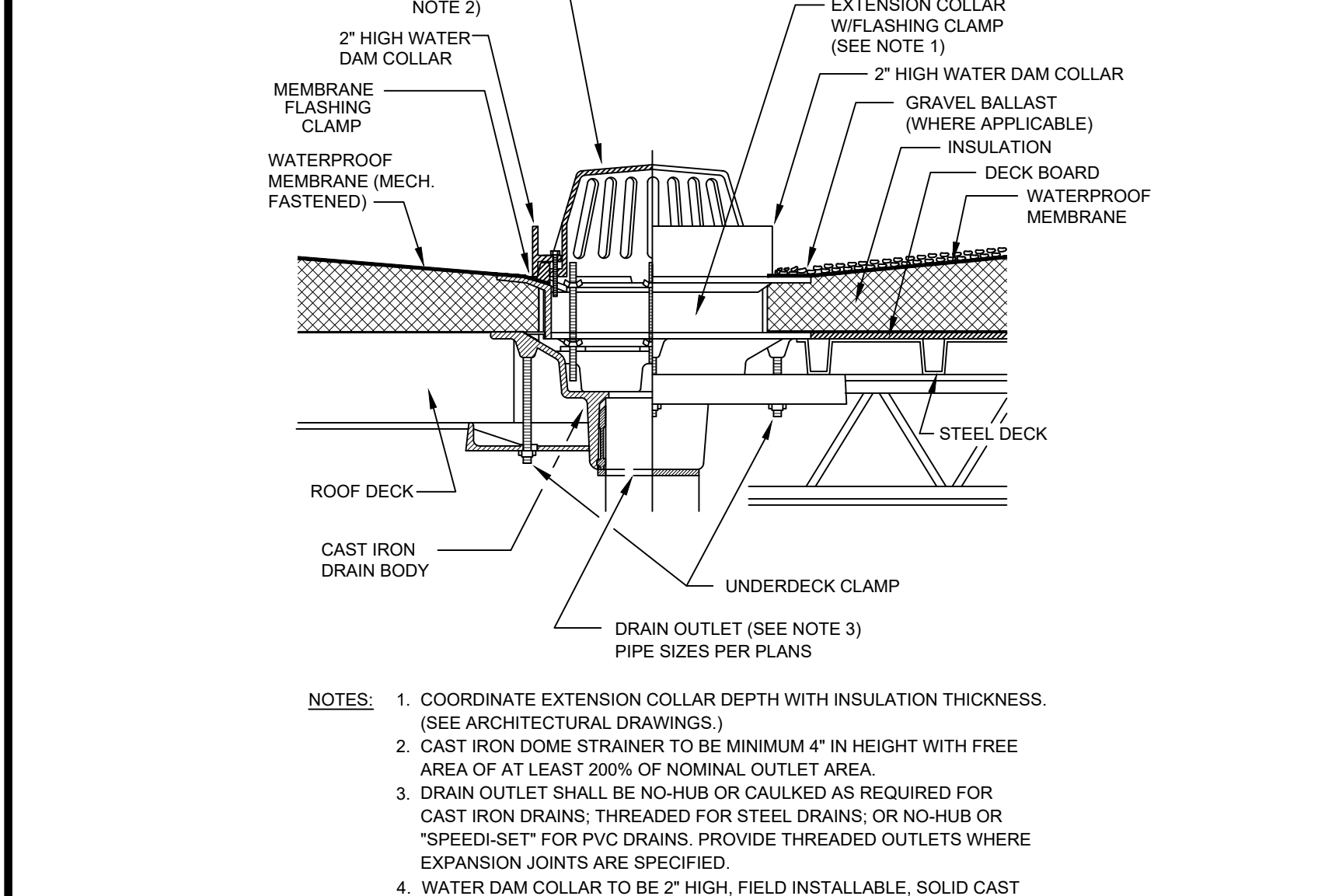
ELECTRONIC TRAP PRIMER DETAIL (N.T.S.) 4



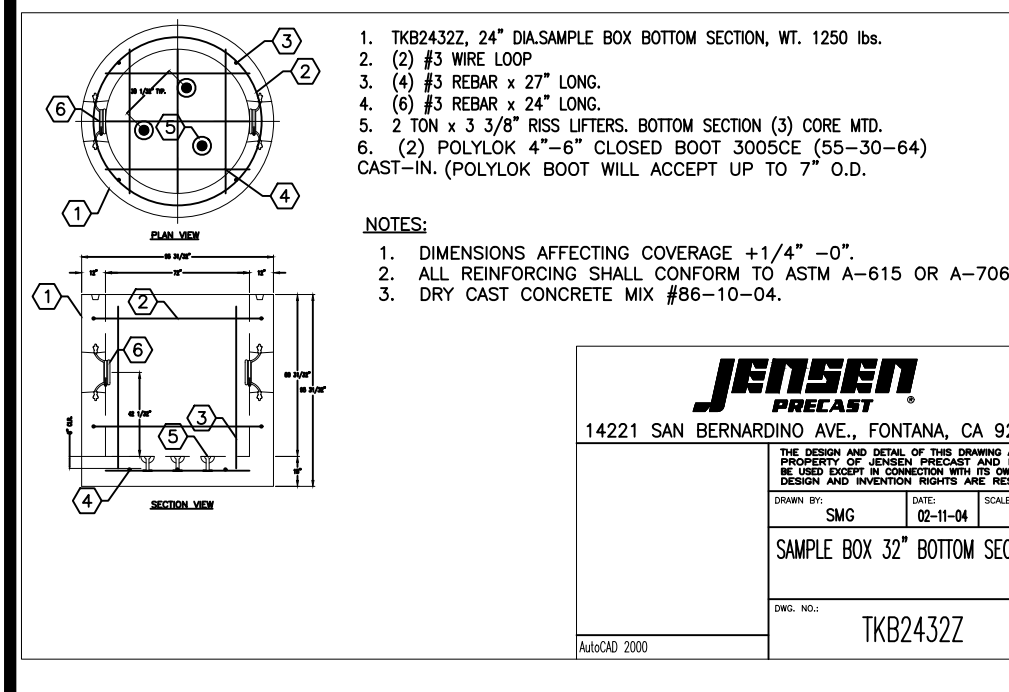
FLASHING DETAIL FOR PIPES 4" AND SMALLER THROUGH ROOF (N.T.S.) 5



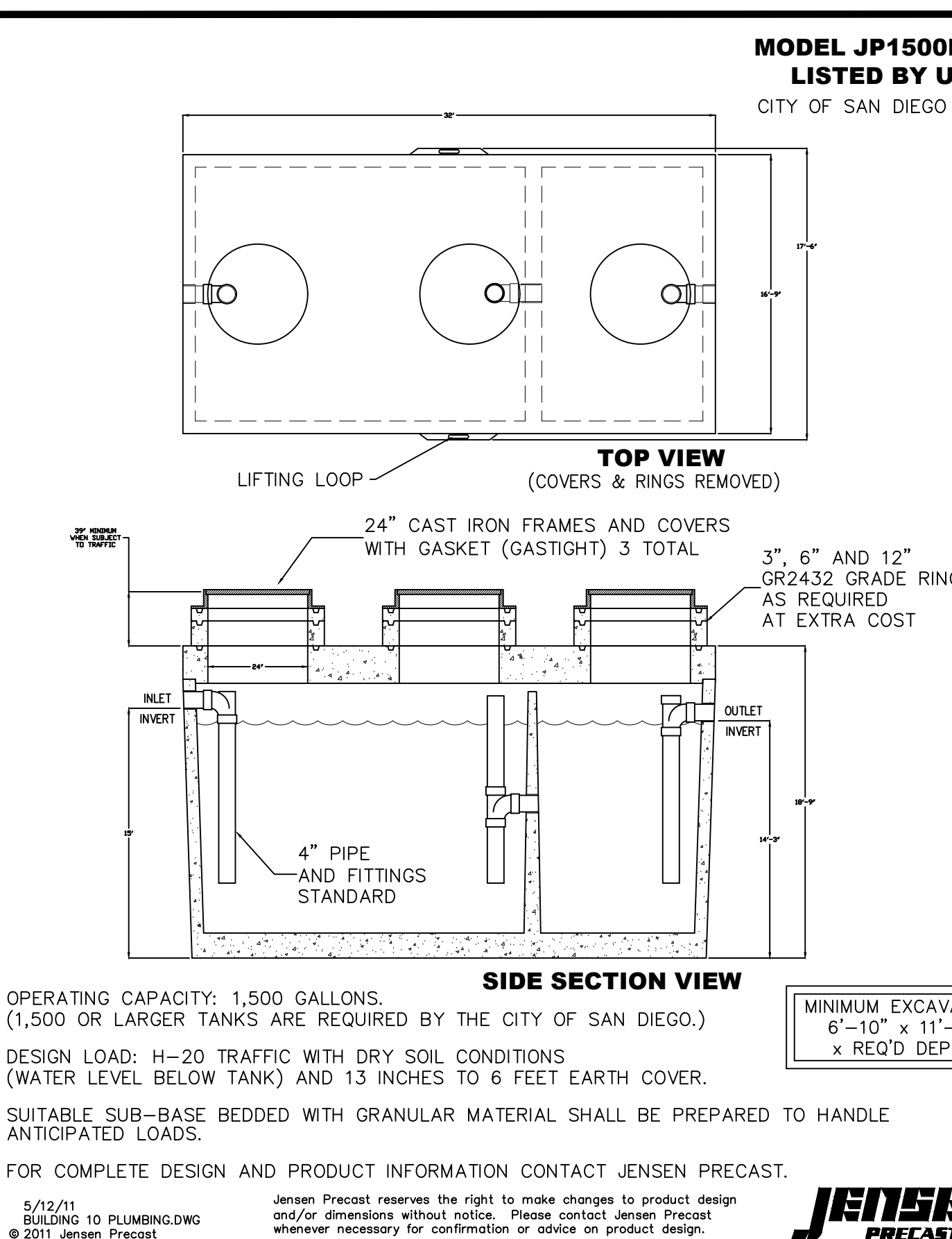
ROOF DRAIN DETAIL FOR INSULATED DECK WITH MEMBRANE ROOFING (N.T.S.) 1



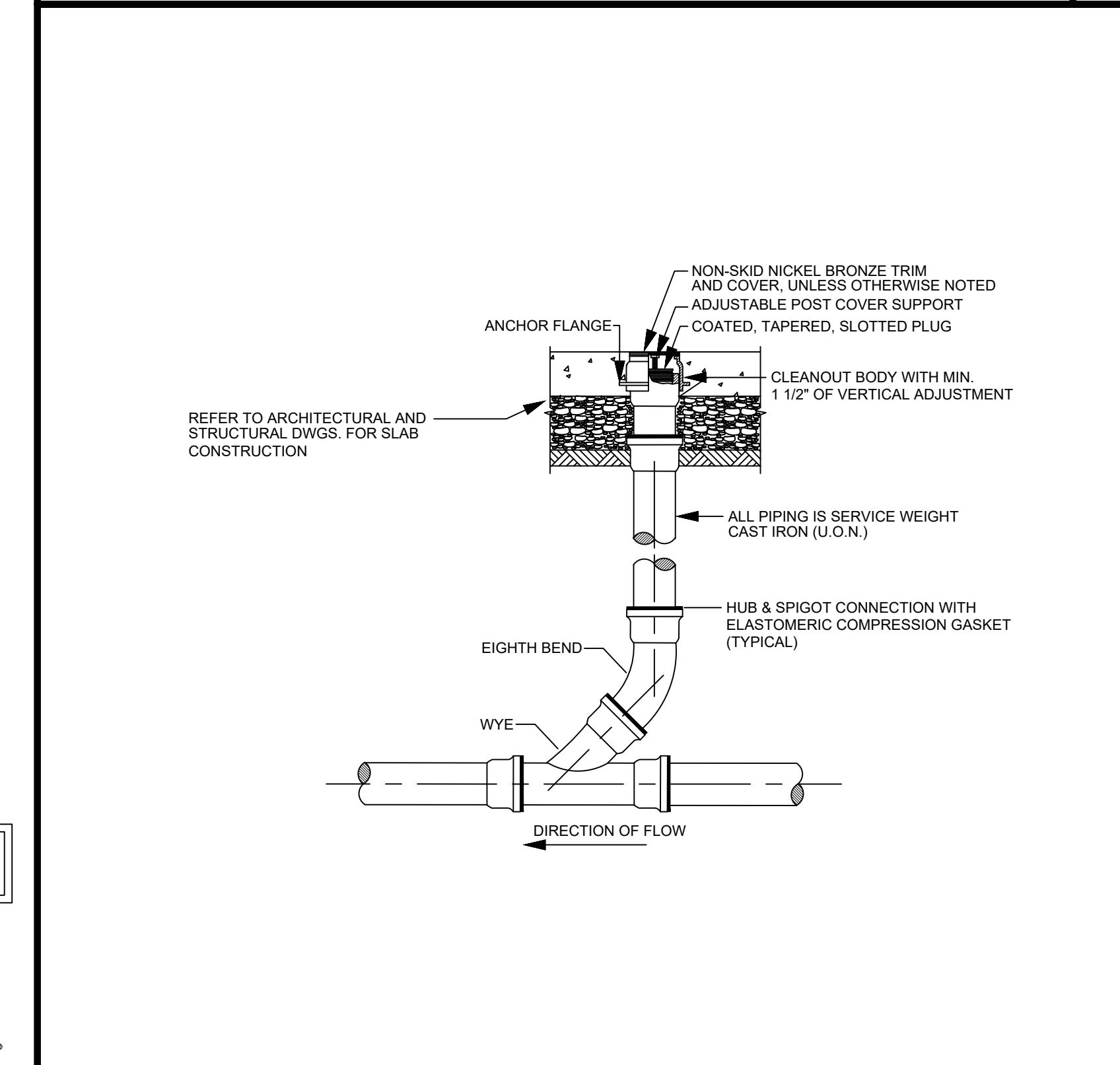
OVERFLOW ROOF DRAIN DETAIL FOR INSULATED DECK WITH MEMBRANE ROOFING (N.T.S.) 2



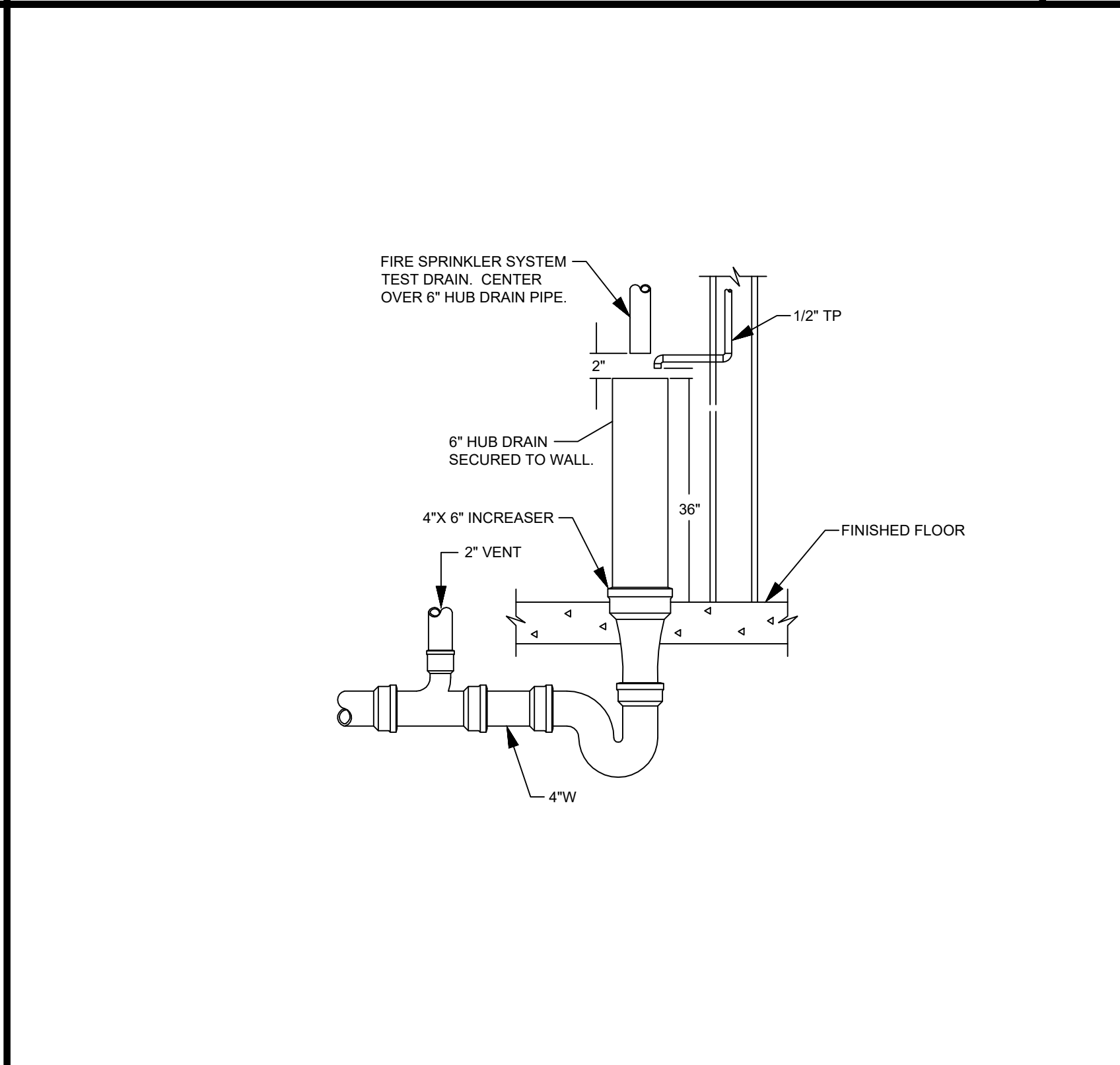
SAMPLE BOX DETAIL (N.T.S.) 8



1,500 GAL GREASE INTERCEPTOR DETAIL (N.T.S.) 7



FLOOR CLEANOUT DETAIL (N.T.S.) 6



STANDPIPE DRAIN DETAIL (N.T.S.) 3

County of Orange - OC Public Works
 OC Development Services
APPROVED

This set of plans and specifications must be kept on the job at all times. It is unlawful to make any changes or alterations to these plans without written permission from OC Public Works, OC Development Services of Orange County. The changing of these plans specifications SHALL NOT be held to permit for an approval of the violation of any provisions of any County Ordinance or State law.

Hani Taharabae
 BUILDING OFFICIAL

Building & Safety: ocpwAzarvanB 8/31/2023
 Permits: PLB23-0186

SMS ARCHITECTS

100 Progress #250
 Irvine, California 92618
 949.757.3240 | www.sms-arch.com

CONSULT

Linwood Engineering Inc.
 2350 Airport Drive, Suite 150
 Irvine, CA 92614 • 714.426.0000
 www.linwoodengineering.com

DANA POINT HARBOR COMMERCIAL CORE

BUILDING 10
 1090 HARBOR WAY
 DANA POINT, CA 92629

BURNHAM | WARD
 ARCHITECTS

BWP PROPERTIES

REGISTERED PROFESSIONAL ENGINEER
 SCOTT A. DAVENPORT
 MECHANICAL
 STATE OF CALIFORNIA
 EXP. 6/30/22

| NO. | DATE | ISSUE |
|-----|------------|--------------------|
| 1 | 08-01-2021 | COUNTY SUBMITTAL |
| A | 09-24-2021 | COUNTY RESUBMITTAL |
| D | 10-17-2022 | COUNTY RESUBMITTAL |

PERMITS AND WRITTEN MATERIAL APPROVING THESE CONSTRUCTION AND APPLICABLE WORK OF THESE ARCHITECTS MAY NOT BE REPRODUCED OR COPIED WITHOUT WRITTEN CONSENT OF THE ARCHITECT

PROJECT NO: 19019-10
 DATE: 02/19/2020

PLUMBING DETAILS AND SCHEDULES

DRAWING NO:

P3.1.1

10/12/2022 10:20:44 AM

FIXTURE SPECIFICATIONS

RD-1: ROOF DRAIN - ZURN MODEL #2C100-C-R-VP, DURA-COATED CAST IRON BODY WITH CAST IRON DOME. COMPLETE WITH UNDERDECK CLAMP, ROOF SUMP RECEIVER, AND VANDAL-PROOF SECURED TOP. SPECIFY NO-HUB OUTLET OF SIZE SPECIFIED ON PLUMBING PLANS.

OD-1: OVERFLOW DRAIN - ZURN MODEL #2C100-89-C-R-VP, DURA-COATED CAST IRON BODY WITH CAST IRON DOME. COMPLETE WITH UNDERDECK CLAMP, 2" HIGH WATER DAM, ROOF SUMP RECEIVER, AND VANDAL-PROOF SECURED TOP. SPECIFY NO-HUB OUTLET OF SIZE SPECIFIED ON PLUMBING PLANS.

WC-1: ELONGATED FLUSH VALVE WATER CLOSET TO TOILET/WALL MOUNT SIPHON JET FLUSH VITREOUS CHINA WATER CLOSET WITH 1-1/2" BACK Siphon. CERAMIC GLAZE, AND SENSOR-OPERATED 1.28 GPF FLUSH VALVE. PROVIDE WITH TOTO TETZLACHS HSS ECOPOWER FLUSH VALVE, MOUNT AT ADA HEIGHT.

L-1: WALL MOUNT LAVATORY KOHLER "PINOR" K-2035-1 VITREOUS CHINA WALL MOUNT LAVATORY WITH MOUNTING KIT, PROVIDE 30 GPM. EBF-15-4-BAT-BDM-CP-0-355P/M/L-M/R-FCT 0.175 GALLON PER CYCLE METERING LAVATORY FAUCET. PROVIDE 1-1/4" ADJUSTABLE TRAP BY KOHLER. ANGLE STOPS BY BRASSKRAFT, AND FLEX SUPPLIES. PROVIDE INSULATION TO COVER WATER, TRAP AND DRAIN PIPING. INSTALL AT ADA MOUNTING HEIGHT.

MS-1: MOP SINK 36"x24" MOP BASIN BY FIAT OR EQUAL. PROVIDE WITH 3" CHROME PLATED GRID DRAIN, T&S BRASS HB-0665-BSTP CHROME PLATED WALL MOUNTED FAUCET WITH INTEGRAL VACUUM BREAKER, ADJUSTABLE WALL BRACE, PAIL HOOK AND HOSE THREADED OUTLET.

DD-1: DECK DRAIN MIFAB F1100-225 CAST IRON AREA DRAIN WITH REINFORCED 6" X 6" SQUARE STRAINER & NO-HUB OUTLET.

HB-1: HOSE BIBB MIFAB HY-3505-NPB ENCASED LOW LEAD MODERATE CLIMATE WALL HYDRANT WITH VACUUM BREAKER AND KEY LOCK DOOR.

HB-2: ROOF HYDRANT MIFAB MHY-58 SELF-DRAINING, NON-FREEZE ROOF HYDRANT WITH 3/4" MALE HOSE CONNECTION. HEAVY DUTY CAST IRON HEAD WITH LIFT HANDLE.

ETP: ELECTRONIC TRAP PRIMER - PPP, INC. #MP-500-115V ELECTRONIC TRAP SEAL, PRIMER WITH AIR GAP. DISTRIBUTION UNIT W/ 1/4" OPENING PORTS, AND 120 VAC CONTROL UNIT. INSTALL COMPLETE W/ SHUT-OFF VALVE, AND 1/2" TYPE L COPPER DRAIN LINE FROM TRAP SEAL PRIMER OUTLET TO RECEPTOR CONNECTION POINT. SEE DETAIL ON DRAWING P3.1 FOR MORE INFORMATION.

WCO: JAY R. SMITH #4402, INSTALLED +18" AFF FLOOR. JAY R. SMITH #4220, INSTALLED FLUSH WITH FLOOR. JAY R. SMITH #4220, INSTALLED FLUSH WITH GRADE. WATER HAMMER ARRESTOR WATER HAMMER ARRESTOR BY WATTS REGULATOR OR APPROVED EQUAL. PROVIDE AT END OF ALL BRANCHES.

SCHEDULE OF NEW PLUMBING FIXTURES

| FIXTURE TAG | FIXTURE CONNECTIONS (VALVE INLET) | | | | | GPM GPF | FLOOR RIM (A.F.F.) |
|-------------|-----------------------------------|-----------|--------|--------|------|-----------|--------------------|
| | TRAP | WASTE | VENT | C.W. | H.W. | | |
| RD-1 | --- | SEE PLANS | --- | --- | --- | --- | AT ROOF |
| OD-1 | --- | SEE PLANS | --- | --- | --- | --- | AT ROOF |
| WC-1 | INT. | 3" | 2" | 1-1/2" | --- | 1.28 GPF | SEE ARCH. |
| L-1 | 1-1/2" | 1-1/2" | 1-1/2" | 1/2" | 1/2" | 0.175 GPM | SEE ARCH. |
| MS-1 | 3" | 3" | 1-1/2" | 1/2" | 1/2" | 2.0 GPM | APPROX. 2-10" |
| DD-1 | --- | SEE PLANS | --- | --- | --- | --- | FLUSH |
| HB-1,2 | --- | --- | --- | 3/4" | --- | 2.5 GPM | --- |
| TP / ETP | --- | --- | --- | 1/2" | --- | --- | --- |
| WCO | --- | SEE PLANS | --- | --- | --- | --- | 18" AFF FLUSH |

ROOF DRAIN SIZING TABLE

BASED ON CPC TABLES 1103.1, 1103.2
IN DANA POINT, CA. DESIGN RAINFALL RATE IS 3.0 INCHES PER HOUR (FOR 100 YR. 60 MIN. RAINFALL)

PROJECTED AREAS ALLOWED FOR PIPE SIZES:

| DRAINS & VERTICAL PIPING | 3" | 4" | 6" | 8" | 10" |
|-----------------------------------|-----------------------|-----------------------|------------------------|------------------------|------------------------|
| | 2,930 FT ² | 6,130 FT ² | 17,995 FT ² | 38,660 FT ² | N/A |
| HORIZ. PIPING 1/8" PER FOOT SLOPE | 1,096 FT ² | 2,506 FT ² | 7,133 FT ² | 15,330 FT ² | 27,600 FT ² |

SCHEDULE OF ELECTRIC WATER HEATERS

| TAG | MAKE & MODEL | TANK CAP. / GAL. | KW RATING | ELECTRICAL RATING | RECOVERY @ 60°F RISE | WATER INLET | WATER OUTLET | DIMENSIONS DIA. X H | REMARKS |
|------|---|------------------|-----------|-------------------|----------------------|-------------|--------------|---------------------|-------------------|
| WH-1 | AO SMITH DURA-POWER #DEL-20 SINGLE 4.0 KW ELEMENT | 20 GAL. | 4.0 | 480/160 | 27 GPH | 3/4" | 3/4" | 21-3/4" X 22-1/4" | SEE NOTES 1, 2, 3 |

- NOTES:
1. JUNCTION BOX & BRANCH CIRCUIT WIRING SHALL BE FURNISHED AND INSTALLED BY ELEC. CONTRACTOR.
2. CONTRACTOR TO SET OUTLET TEMPERATURE TO 120°F.
3. ELEMENT SHALL BE CONTROLLED BY AN INDIVIDUALLY MOUNTED THERMOSTAT AND HIGH TEMPERATURE CUTOFF SWITCH.

SCHEDULE OF EXPANSION TANKS

| TAG | TYPE | MANUFACTURER/MODEL NO. | VOLUME (GAL.) | HEIGHT (INCHES) | DIAMETER (INCHES) | WEIGHT (LBS.) | WATER CONNECTION (N.P.T.) | MOUNTING TYPE | REMARKS |
|------|-----------|------------------------------|---------------|-----------------|-------------------|---------------|---------------------------|---------------|-------------------|
| ET-1 | DIAPHRAGM | AMTROL "THERM-X-TROL" #ST-SC | 2.0 | 14" | 8" | 10 | 3/4" | WALL | SEE NOTES 1, 2, 3 |

- NOTES:
1. EXPANSION TANK SHALL BE FABRICATED OF CARBON STEEL WITH POLYPROPYLENE LINER AND HEAVY DUTY, BUTYL RUBBER DIAPHRAGM.
2. EXPANSION TANK SHALL BE SUITABLE FOR USE IN POTABLE WATER SYSTEMS.
3. PROVIDE THE MANUFACTURER'S PRINTED SIZING INSTRUCTIONS ON THE THERMAL EXPANSION TANK.

GREASE INTERCEPTOR SCHEDULE (SHELL ONLY- NO OCCUPANCY)

| TAG | LOCATION | MANUFACTURER MODEL NO. | SIZE (L X W X H) | VOLUME (GALLONS) | SERVICE | CAPACITY PER CPC | NOTES |
|-------|------------------|----------------------------|-------------------------|------------------|-------------|------------------|-------|
| GI-11 | SEE SHEET A1.0.1 | JENSEN PRECAST JP1500ECE-G | 10'-8" X 5'-10" X 6'-3" | 1,500 | BUILDING 11 | 172 DFU | 1,2,3 |

- NOTES:
1. INSTALL PER MANUFACTURER'S INSTALLATION INSTRUCTIONS.
2. HEIGHT WILL VARY WITH RISERS. SEE SPECIFICATION SHEET FOR MORE INFO.
3. PROVIDE SAMPLE BOX PER JENSEN PRECAST SPECIFICATIONS AND DETAILS ON THIS DRAWING.

WATER AND WASTE SERVICE CALCULATIONS (SHELL ONLY - NO OCCUPANCY)

| FIXTURE TYPE | WASTE | | COLD WATER | | HOT WATER | | TOTAL WATER |
|------------------|-------|-------------|------------|-------------|-----------|------------|-------------|
| | FU | TOTAL | FU | TOTAL | FU | TOTAL | |
| LAVATORY | 2 | 1 | 2 | 1 | 2 | 1 | 2 |
| MOP SINK | 1 | 3 | 3 | 3 | 3 | 3 | 3 |
| WATER CLOSET, FV | 2 | 4 | 8 | 5 | 10 | 0 | 10 |
| HOSE BIBB | 2 | 0 | 2.5 | 5 | 0 | 0 | 5 |
| TOTAL FU | | 13.0 | | 20.0 | | 5.0 | 20 |

DOMESTIC WATER CALCULATIONS

BASED ON CPC 610 AND CPC APPENDIX A
BUILDING 11

STREET SERVICE: AVAILABLE STATIC PRESSURE AT CITY MAIN: 68 PSI

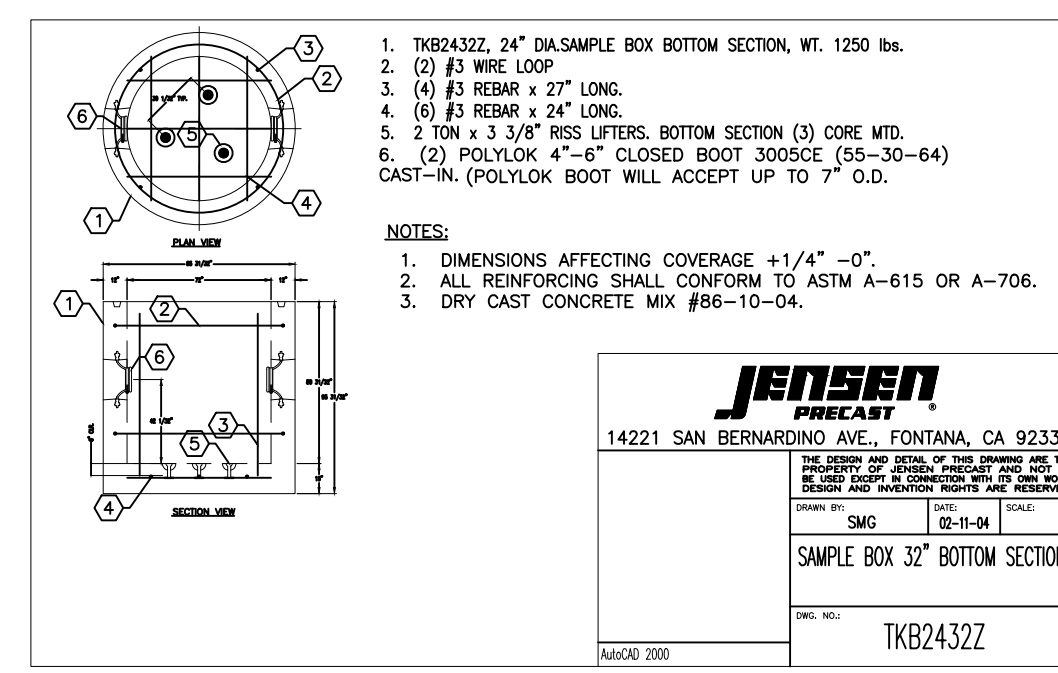
LOSSES:

| | |
|---|---------|
| FRICTION LOSS IN MAIN METER: | 5 PSI |
| FRICTION LOSS IN MAIN BFP: | 13 PSI |
| ELEVATION RISE LOSS: (25 FEET AT 434FT) | 11 PSI |
| MINIMUM PRESSURE REQUIRED AT FIXTURES: | 25 PSI |
| AVAILABLE PRESSURE FOR FRICTION LOSS: | 14 PSI |
| TOTAL DEVELOPED LENGTH: | 350 FT |
| AVAILABLE FRICTION LOSS PER 100 FT OF PIPING: | 4.0 PSI |
| MAX FLUSH VALVE WSPUS, 2" LINE: | 95 |

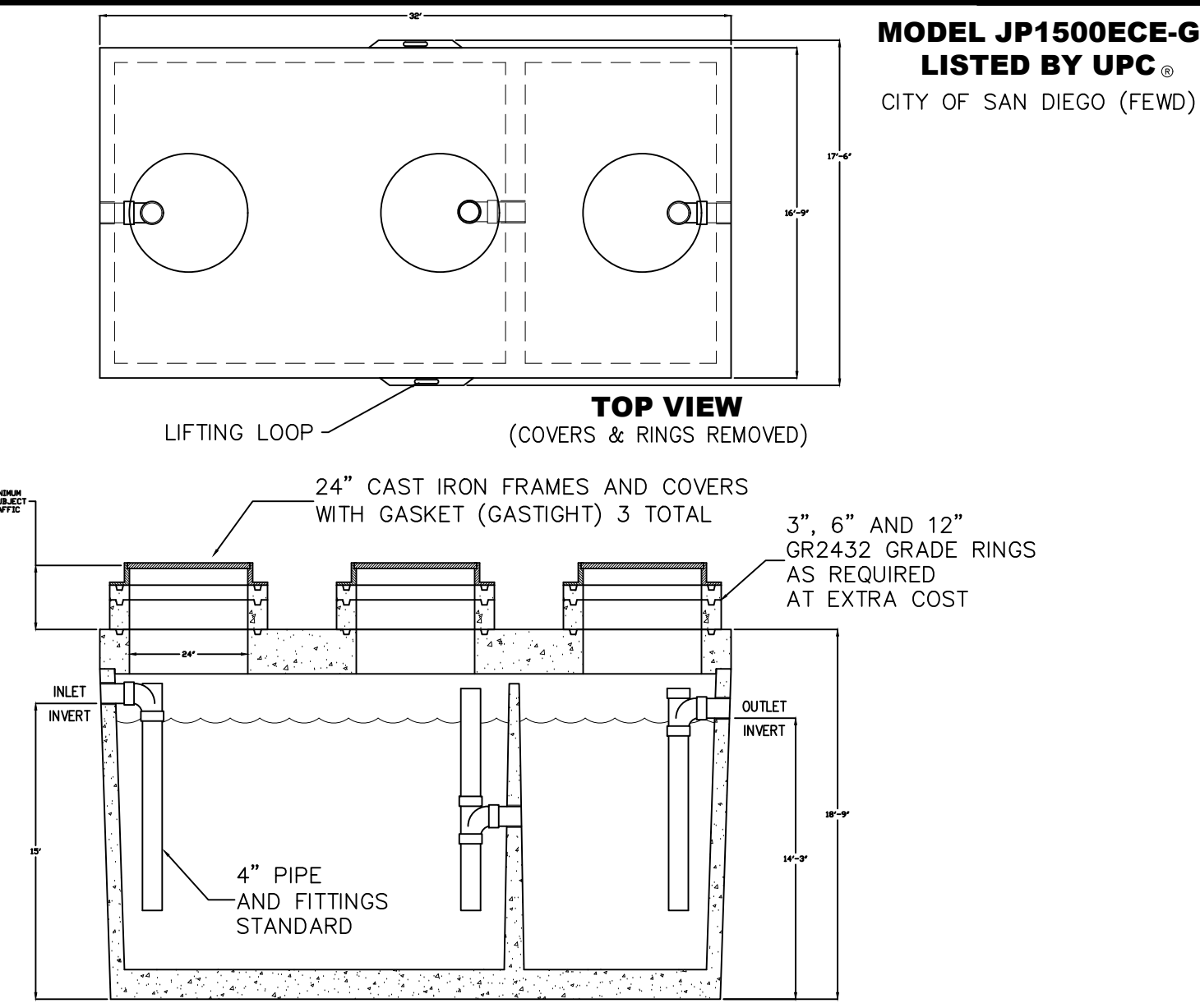
POTABLE WATER PIPE SCHEDULE

| NOMINAL TUBING SIZE | COLD WATER PIPING | | HOT WATER PIPING | |
|---------------------|-------------------|-------------|------------------|------------------|
| | FLUSH TANK | FLUSH VALVE | EQUIVALENT WSFUS | EQUIVALENT WSFUS |
| 1/2" | 1 | 0 | 1 | 1 |
| 3/4" | 6 | 0 | 6 | 6 |
| 1" | 15 | 0 | 15 | 15 |
| 1-1/4" | 30 | 0 | 28 | 28 |
| 1-1/2" | 56 | 14 | 46 | 46 |
| 2" | 205 | 95 | 119 | 119 |

- NOTES:
1. 1/2" NOMINAL TUBING SIZE IS FOR FIXTURE CONNECTIONS ONLY AND SHALL NOT BE USED FOR BRANCH PIPING.
2. SIZING BASED ON FRICTION LOSS OF 4.0 PSI PER 100 FEET.
3. GPM AND WSPUS LIMITED BY 8.0 FPS VELOCITY FOR COLD WATER
4. GPM AND WSPUS LIMITED BY 5.0 FPS VELOCITY FOR HOT WATER
5. INSIDE POTABLE WATER SUPPLY PIPING SHALL BE OF TYPE "L" COPPER.

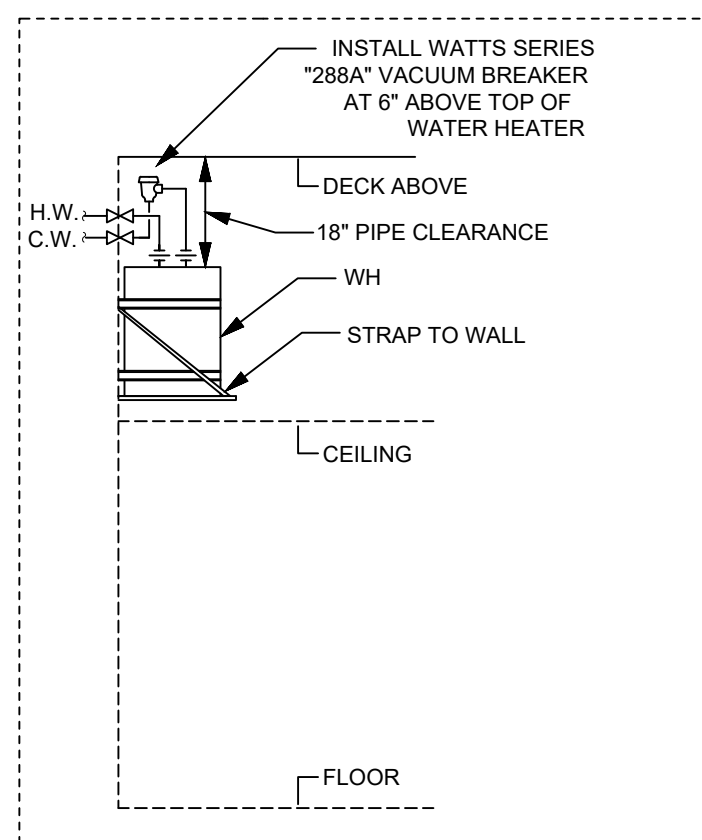


SAMPLE BOX DETAIL (N.T.S.) 9



1,500 GAL GREASE INTERCEPTOR DETAIL (N.T.S.) 8

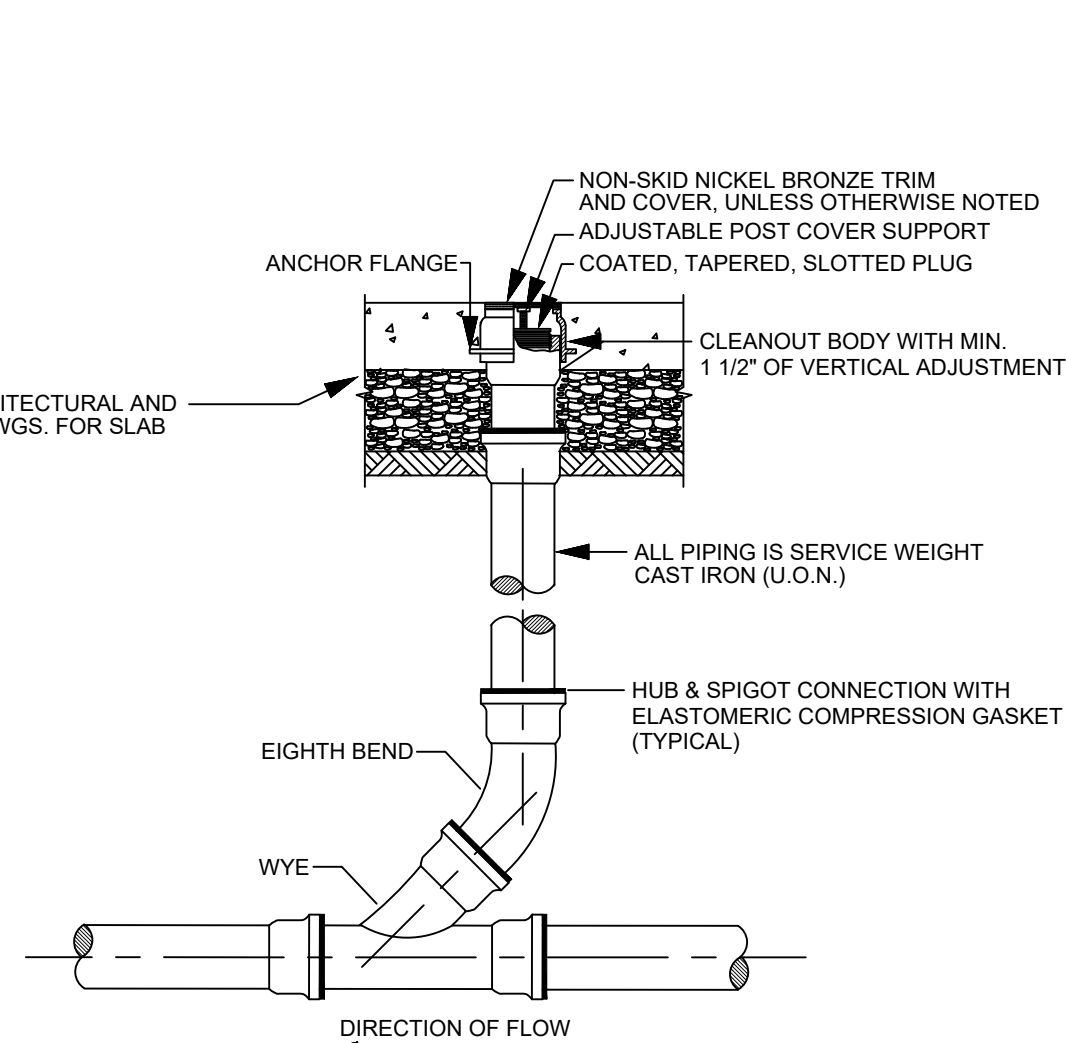
FLASHING DETAIL FOR PIPES 4" AND SMALLER THROUGH ROOF (N.T.S.) 5



- NOTE: PLEASE SEE WATER HEATER SPECIFICATION AND DETAILS. ALSO PROVIDE WALL MOUNT FOR EXPANSION TANK PER MANUFACTURER'S RECOMMENDATION.

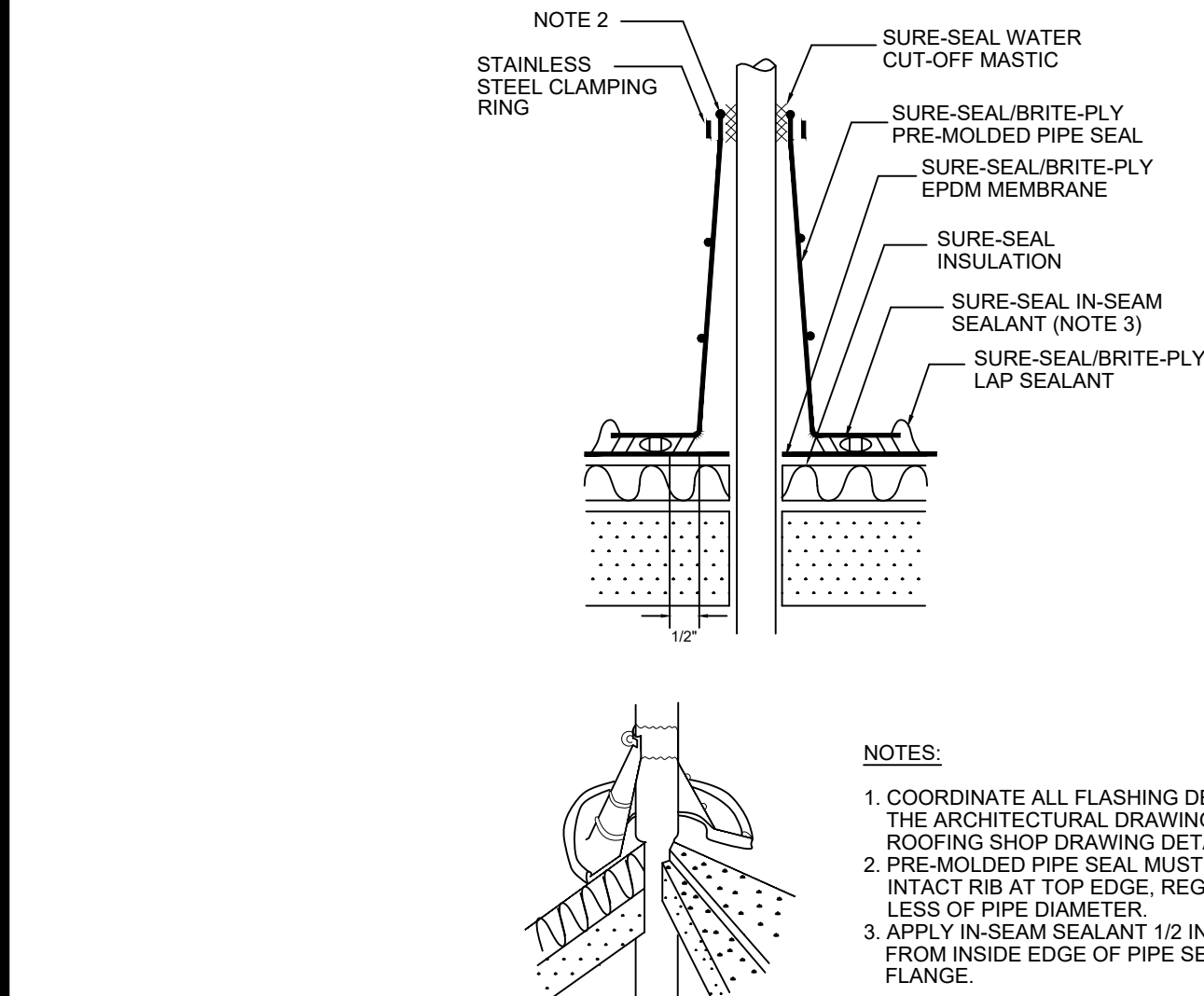
WATER HEATER SHELF ELEVATION (N.T.S.) 7

OVERFLOW ROOF DRAIN DETAIL FOR INSULATED DECK WITH MEMBRANE ROOFING (N.T.S.) 2

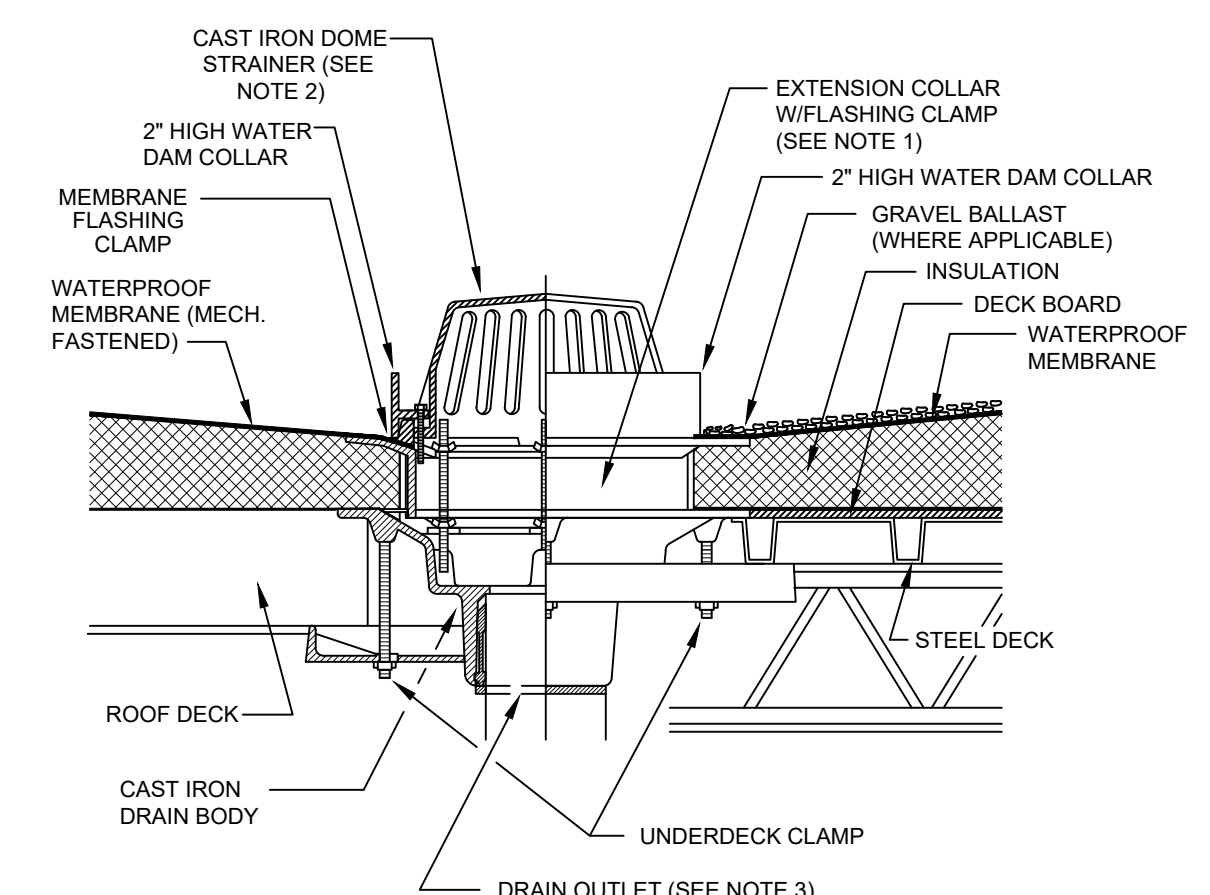


FLOOR CLEANOUT DETAIL (N.T.S.) 6

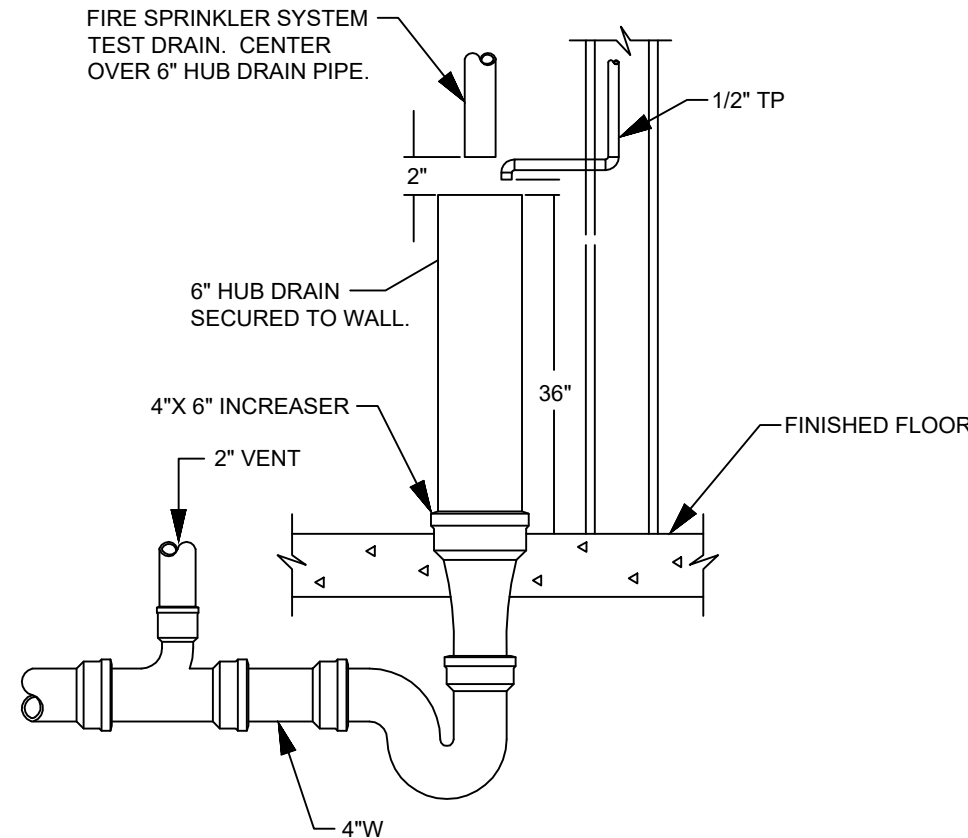
ELECTRONIC TRAP PRIMER DETAIL (N.T.S.) 4



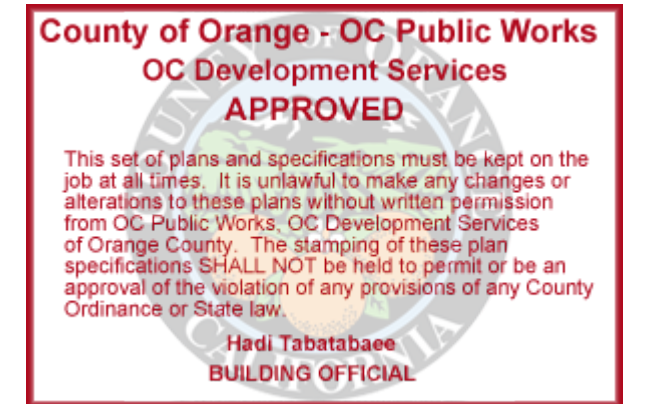
ROOF DRAIN DETAIL FOR INSULATED DECK WITH MEMBRANE ROOFING (N.T.S.) 1



STANDPIPE DRAIN DETAIL (N.T.S.) 3



STANDPIPE DRAIN DETAIL (N.T.S.) 3



Building & Safety: ocpwAzarvanB 8/31/2023
Permits: PLB23-0186

SMSARCH
18004 Sky Park Circle, #200
Irvine, California 92614
Ph. 949.757.3240
www.sms-arch.com



DANA POINT HARBOR - BUILDING 11

34481 GOLDEN LANTERN
DANA POINT, CA

BWP BURNHAM | WARD
P R O P E R T I E S



| No. | DATE | ISSUE |
|-----|------------|--------------------|
| 1 | 08-01-2021 | COUNTY SUBMITTAL |
| A | 09-24-2021 | COUNTY RESUBMITTAL |

PROJECT NO: Project Number
DATE: 2021.03.20
PLUMBING DETAILS & SCHEDULES

P3.1.1

